

Special Report

Arkansas Legislative Audit

Arkansas Fire Safety Update of 2003 Report

For the Period January 1, 2020 through December 31, 2021



INTRODUCTION

This report is issued pursuant to a request, approved by the Executive Committee of the Legislative Joint Auditing Committee (LJAC), for Arkansas Legislative Audit (ALA) to update a special report issued in June 2003 (2003 Special Report) concerning the State's fire safety preparedness in the areas of personnel, training, and equipment. This report also discusses the services provided by and the needs of fire departments in the State.

OBJECTIVES

The objectives of this review were to:

- Update the information regarding fire department funding presented in the 2003 Special Report.
- Determine the status of the various recommendations contained in the 2003 Special Report.
- Compile information concerning personnel, training, and equipment preparedness for rural and municipal fire departments.
- Provide the organization of fire services in Arkansas.
- Provide the current and 2003 Insurance Service Office, Inc., Public Protection Classification rating (ISO Rating) for all Arkansas fire departments.

HIGHLIGHTS OF REPORT

- Just under **\$16 million in Act 833 funds** was distributed to counties and municipalities in Arkansas in calendar year 2021 and disbursed to fire departments (see **Schedule 2**).
- Approximately **86% of Arkansas's active firefighters** are associated with a department that is at least partially staffed by volunteers.
- Most departments identified **insufficient staff, difficulty recruiting volunteers, limited access to "burn buildings" for training, rising equipment costs, and reduced availability of used equipment** as significant challenges. Others noted lack of communications equipment and coverage, as well as lack of high-speed internet as hinderances to providing services.
- ALA staff sought to acquire the **ISO Ratings** for all Arkansas fire departments for the most recent period available, for comparison to the previously presented 2003 ratings. However, ISO denied this request, and no other source of complete information could be identified (see **Appendix C**).

ARKANSAS LEGISLATIVE AUDIT
500 Woodlane Street, Suite 172, Little Rock, AR 72201
Phone: 501-683-8600 • Fax: 501-683-8605
www.arklegaudit.gov

Report ID: SPSA61421

Report Date: July 5, 2022



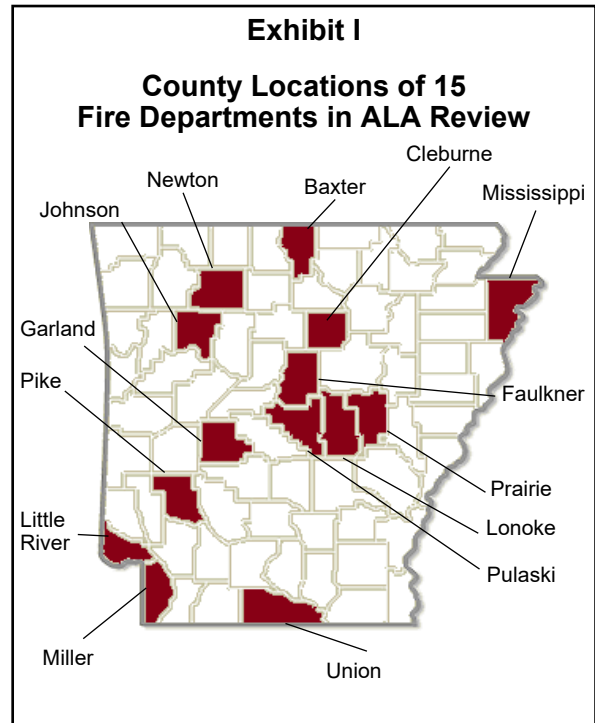
SCOPE AND METHODOLOGY

This review was conducted primarily for the January 1, 2020 through December 31, 2021. ALA staff obtained information for this report from representatives of the following entities:

- **Office of Fire Protection Services** (located within the Department of Public Safety – Arkansas Division of Emergency Management).
- **State Fire Marshal** (located within the Department of Public Safety – Arkansas Division of State Police).
- **Division of Rural Services** (located within the Department of Commerce – Economic Development Commission).
- **Arkansas Forestry Division** (located within the Department of Agriculture).
- **Arkansas Fire Training Academy** (located within SAU-Tech of Southern Arkansas University).

Additionally, ALA staff conducted interviews with personnel from 15 Arkansas fire departments located in 14 counties around the State, as shown in **Exhibit I**.

Finally, ALA staff reviewed legislation, websites, and program guidance and acquired financial information from the Arkansas Administrative Statewide Information System (AASIS) and disbursing agencies to identify state-level support provided to counties and municipalities for fire service-related programs.



BACKGROUND

Fire departments provide fire response services in three distinct areas: (1) structure fires, (2) brush or grass fires (wildland fires), and (3) automobile fires. Each service requires a different type of response and equipment to extinguish the fire.

In addition to combating fires, many fire departments provide additional services that require diverse training and equipment, including the following:

- Emergency medical response services (EMS).
- Inspections of commercial and governmental buildings for compliance with established fire codes.
- Hazmat responses for hazardous material spills or contaminations.

Fire departments are categorized as either **rural** or **municipal**. Rural departments are supported primarily through volunteer contributions from local property owners or created by the majority of landowners in a designated area and authorized to extend an annual assessment on all property owners in the established district. Municipal departments are formed by municipal ordinances. Departments can be further characterized by whether their staff are **paid** or serve on a **volunteer** basis. It should be noted that some departments have both paid and volunteer staff.

FIRE DEPARTMENT FUNDING

Fire departments generally receive their funding from five sources:

1. Funding provided through the Fire Protection Services Program (Act 833 funds).
2. Local funding, which includes special sales tax, property tax fees, and general funds.
3. Grants from governmental and private entities.
4. Membership fees/dues from individuals and businesses within a department's service area.
5. Fundraisers or donations from individuals and businesses.

During interviews with ALA staff, personnel at 13 of 15 fire departments reviewed provided the types and approximate amounts of funding received annually, as shown in **Exhibit II**. Each source of funding is discussed separately in the sections that follow.

Exhibit II

Annual Funding for 13 of 15 Fire Departments Reviewed (Amounts and types are approximate.)

Funding Source	Department												
	1	2	3	4	5	6	7	8	9	10	11	12	13
Act 833 funding	\$ 14,000	\$ 9,000	\$ 12,000	\$ 44,000	\$ 20,000	\$ 18,000	\$ 15,000	\$ 16,500	\$ 10,500	\$ 12,500	\$ 8,500	\$ 5,600	\$ 11,000
Local tax (dedicated)*	48,000				817,000		13,000				9,000		35,000
Local general funding						2,000	5,200	45,000		700		2,000	
Grants		3,000	500										
Membership fees/dues		5,000		35,000		4,300			5,000	38,000		7,000	
Fundraisers/Donations		3,000	1,800			1,000			3,500	3,500	300	7,500	4,000
Other (permits, fees)					1,300						2,400		
Totals	\$ 62,000	\$ 20,000	\$ 14,300	\$ 79,000	\$838,300	\$ 25,300	\$ 33,200	\$ 61,500	\$ 19,000	\$ 54,700	\$ 20,200	\$ 22,100	\$ 50,000

* This amount could include a dedicated sales tax or property tax assessment levied for fire protection services.

Source: Interviews with personnel at selected Arkansas fire departments (unaudited by Arkansas Legislative Audit)

Act 833 Funding

Created by Act 833 of the Regular Session of 1991 (codified at Ark. Code Ann. § 14-284-403), Act 833 monies provide a significant source of funding for most fire departments and are derived from a ½ of 1 percent (0.5%) tax on certain insurance policies, collected from insurers by the Arkansas Insurance Commissioner. Collections are deposited quarterly into the Fire Protection Premium Tax Fund, allocated by the Department of Finance and Administration (DFA) among the 75 counties using percentages established by Act 833, and then distributed to cities and counties by DFA based upon quorum court resolutions on file.

In calendar year 2021, just under \$16 million in Act 833 funds was distributed to counties and municipalities in the State. **Schedule 1 on pages 23 and 24** shows the amounts distributed by DFA to each county in 2021, along with amounts allocated to the counties in 2001. Act 833 funds disbursed in 2021 are provided by fire department in **Schedule 2 on pages 25 through 46**. Without this funding, many fire departments in the State would not be able to function adequately or even exist.

To be eligible for Act 833 funds, a fire department must be certified annually by the Office of Fire Protection Services. The department must meet certain requirements, which can only be changed with approval from the Fire Protection Services Board. One requirement is that the firefighters complete certain training courses (i.e., introduction to firefighting, protective equipment, and wildland fire suppression). A list of the 905 Arkansas fire departments certified by the Office of Fire Protection Services for 2019, and eligible for Act 833 funds in 2020, is provided by county in **Appendix A**.

Furthermore, as part of the annual certification process, each department reports the number of active firefighting personnel and identifies whether the department's staff are paid, volunteer, paid on call, or some combination of these. As shown in **Appendix A**, the number of active firefighting personnel associated with the "paid" departments was 2,329, indicating that approximately 86% (13,836) of Arkansas's active firefighters are associated with a department that is at least partially staffed by volunteers.

Act 833 funds may only be used for authorized purchases as determined by the Arkansas Fire Protection Services Board. A non-exclusive listing of allowable and unallowable expenditures is presented in **Exhibit III on page 5**. Each department must report its expenditures of Act 833 funds annually to the Office of Fire Protection Services as part of the certification process.

Finally, since the release of the 2003 Special Report, the following significant legislative changes have been made to Act 833 funding:

- **2003:** The authority of county governments to maintain rural volunteer fire department property was amended, and the authorized official empowered to maintain the real property was changed from the county quorum court to the county judge.
- **2003:** Fire protection districts covering more than one county became eligible to receive Act 833 funds from each county.
- **2005:** County treasurers were prohibited from collecting commission on Act 833 funding.
- **2011:** Distribution of Act 833 funds to inactive fire departments was prohibited.
- **2013:** Allowed expenditures of Act 833 funds to be extended to include utility costs and insurance for buildings.
- **2015:** Legislation clarified that Act 833 funding is state funding; therefore, it is not subject to county appropriations or claims processes and is to be disbursed to fire departments as prescribed in state law.
- **2017:** Access to a "washer-extractor" for cleaning "turnouts" and other firefighter clothing was added as a requirement for receiving Act 833 funds, effective January 1, 2022.

Certification requirements for fire departments were also amended legislatively but are not discussed in this report.

Local Funding

Local funding is typically a large portion of a department's budget. The source of local funding varies from community to community but primarily consists of proceeds of a special sales tax, the application of a fee on a home or business owner's property tax, or a designated portion of a municipality's general budget. The amount and source of funding received by every local department is too varied to present in this report. All departments do not receive local funding; however, **Exhibit II on page 3** presents the type and amount of funding received by 13 of the 15 departments interviewed by ALA staff.

Exhibit III

**Allowable and Unallowable Uses of Act 833 Funds
As Determined by the Arkansas Fire Protection Services Board
As of June 30, 2022**

Allowable Expenditures

Architectural/engineering fees as part of an allowable construction project	Internet access (\$60 per month limit)
AED (defibrillator)	Extrication equipment
Audio equipment	Fire scene equipment
Batteries	First aid supplies
Camera	Land for new fire station
Camcorder	Matching grants
Chargers	Physical fitness equipment
Computer	Printers
Copier	Radio license
Equipment for the care of personal protective equipment (PPE) and firefighter gear and hose	Radio repair
Fax machine	Radio upgrade
Fire apparatus, including service vehicles*	Repair to fire station
Fire hose washer	Salvage and overhaul equipment
Fire hydrants	Safety vests
Fire prevention materials	Software
Fuel (gasoline and diesel)	Support equipment
Fuel cans	Tarps
Hazmat equipment	Tires
Hepatitis vaccination	Trailers
Hose	Vehicle maintenance
Inspections (ISO & Safety)	Vehicle repair
Insurance (liability - fire vehicles only; and fire stations)	Video equipment

*Service vehicles must meet NFPA [National Fire Protection Association] 1901, "Special Service Fire Apparatus." In addition, service vehicles must carry sufficient equipment to obtain 50% of available points on the ISO inventory list.

Unallowable Expenditures

Animals	Late fees
Appliances	Lockers
Bank charges	Monthly rental fees on heating fuel storage tanks
Cell phones	Office supplies
Checks	Station maintenance
Contractual or professional services	Storage shed
Furniture	Uniforms
Interest	Web pages

Note: These lists are not all-inclusive and are for guidance purposes only.

Source: Arkansas Department of Public Safety - Division of Emergency Management - Office of Fire Protection Services (unaudited by Arkansas Legislative Audit)

Grants

In addition to federal and private grants available to local fire departments, the State offers several grants, as discussed on **pages 16 through 18**.

Membership Fees/Dues

Membership fees/dues (also referred to as “service availability fees”) are another source of revenue for some departments. A business or residential property owner periodically pays a certain amount to volunteer fire departments in exchange for fire protection services. However, this income source is unreliable due to the inability of departments to enforce payment of the fees. Some departments are able to include dues in the property tax collection process. Although such payments remain voluntary, personnel at one department mentioned that this method boosted department collections by 50%. Alternatively, another department pays a private company to assist with mailing fee collection notices, which has resulted in an approximately 80% membership rate in its service area.

Furthermore, while Arkansas law requires volunteer fire departments to respond to and attempt to control all reported fires within their district, whether the property is owned by members or nonmembers, volunteer fire departments are entitled to recover the reasonable value of their services from nonmember property owners or the company insuring the property against loss.

Of the 13 departments providing financial information to ALA staff, 6 charge membership fees or dues in the department’s service area. The amounts and rates listed below were provided by each respective department:

1. \$50 to join and \$25 per year for each covered structure.
2. \$50 per year for each covered structure, with a higher amount for businesses (included in property tax collections).
3. \$39 per year for each primary residence.
4. \$40 per year for each emergency address, with \$20 per year for each additional, livable structure at the address.
5. \$40 per year on each residence covered.
6. \$40 per year per livable structure on a parcel.

Fundraising/Donations

Fundraising is another practice fire departments use to generate revenue. Fundraisers include bake sales, festivals or parades, chili or pancake suppers, or raffles of donated or purchased items. While fundraising serves as an additional source of revenue, it can be time-consuming for department personnel, and because financial proceeds vary, it is difficult to include fundraisers in annual department budgets.

During interviews conducted by ALA staff, various department personnel mentioned the receipt of in-kind donations from local businesses. These donations include items to sell at auctions, water for volunteers, and food and desserts from restaurants and individuals to be served at training events and meetings.

UPDATE ON ALA RECOMMENDATIONS CONTAINED IN THE 2003 SPECIAL REPORT

Updates concerning ALA recommendations contained in the 2003 Special Report are discussed in the sections that follow.

Grant Writing Support

In the 2003 Special Report, ALA recommended that, at the state level, more assistance be provided to departments for grant writing and a single contact be established for obtaining information related to federal, state, and private grants.

Although a single contact has not been established for obtaining information regarding grants, ALA staff identified various instances of state agencies assisting fire departments in acquiring grant funding the agencies offer. For example, the Rural Services Division typically hosts four trainings per year concerning its grant programs and visits any additional communities to provide training, if requested. Additionally, presentations regarding Firewise USA® Program grants, available from the Forestry Division, can be regularly scheduled during training nights, lunches, or at any time and location convenient for the department. Forestry Division staff are also available to assist the departments with paperwork.

Furthermore, for Arkansas municipal fire departments, the Arkansas Municipal League provides assistance with applications for various federal and state grants, some of which specifically benefit fire departments. However, there was no other identified assistance for obtaining federal grants, which leaves rural departments without assistance. As mentioned in the **Fire Training Academy** section on **page 19**, one potential barrier to eligibility for federal firefighting grants is the lack of reporting to the National Fire Incident Reporting System (NFIRS) because departments do not have access to high-speed internet. Internet service was recently expanded to one community served by a department where personnel were interviewed by ALA staff, which should help the department to identify potential grant opportunities.

When asked about grant funding, department personnel identified several obstacles, including (1) not being aware of grant opportunities and (2) being discouraged from applying for grants due to past failures to receive them. Regarding the first issue, it should be noted that the “Arkansas Fire Protection Services Resources Plan,” required under Ark. Code Ann. § 20-22-1006 but yet to be implemented, must include plans “[o]n the type, needs, and means to procure firefighting vehicles and equipment for fire services agencies of local government” and “[t]o coordinate the efforts of all state and local government fire service agencies for the purpose of making maximum use of the services and resources for the prevention and mitigation of injury and damage caused by fire and other hazards.” Concerning the second issue, personnel at one department recommended that the State develop a rotational basis for awarding grants and notify departments during their eligible years to apply; doing so would reduce the likelihood of a department applying for and failing to receive highly competitive grants, which discourages future application efforts.

Finally, department personnel mentioned receiving county-level support for assistance in the past. Some department staff mentioned county-level grants that were used to purchase needed equipment, and personnel at one department specifically mentioned receiving recent approval from the county to use federal COVID funding to purchase new radios.

Arkansas Fire Protection Services Resources Plan

ALA noted in the 2003 Special Report that the Office of Fire Protection Services is charged, by law, with creating the Arkansas Fire Protection Services Resources Plan but had yet to do so. Specifically, Act 1303 of 1993 (Ark. Code Ann. § 20-22-1006) dictates that the Office is to develop a comprehensive program for the coordination of resources of the State and its local governments, and the plan must include plans for:

- Providing fire services in the various rural areas that do not have available the benefits or services of an organized or voluntary firefighting program.
- Updating and improving fire services in urban, suburban, and rural areas that have fire services needing improvements and for assisting existing organized and volunteer firefighting services in making those improvements.
- Determining the type, needs, and means to procure firefighting vehicles and equipment for fire services agencies of local governments.
- Developing training programs designed to instruct and train firefighters at the Arkansas Fire Training Academy and to be used by both urban and rural organized and volunteer fire services agencies.
- Coordinating the efforts of all state and local government fire services agencies to maximize use of services and resources for the prevention and mitigation of injury and damage caused by fire and other hazards.
- Measuring the prompt and effective response to fires and other hazards and disasters.
- Identifying areas particularly vulnerable to fire and hazards and other disasters.
- Recommending improvements in the firefighting, prevention, training, mitigation, and adjunct services for state and local fire services agencies.

Finding: *While the Office of Fire Protection Services and other state agencies provide various fire services that align with the requirements of the aforementioned plan, there is no formal, documented plan available for review or distribution to fire departments throughout the State of Arkansas to assist with the orderly coordination, cooperation, and development of fire protection services. As such, it does not appear that the Arkansas Fire Protection Services Resources Plan has been developed as envisioned by the enabling legislation.*

Recommendation: *ALA staff recommend the Office of Fire Protection Services prepare a formal, documented plan that contains all of the requirements of Ark. Code Ann. § 20-22-1006, which could be utilized for distribution to assist with the orderly coordination, cooperation, and development of fire protection services. See **Appendix B** for a copy of Ark. Code Ann. § 20-22-1006 in its entirety.*

Management Response: *Legislation was passed in 1993 requiring an Arkansas Fire Protection Resource Plan. In the past 29 years since legislation was passed, many changes have taken place to enhance fire services throughout the State. All areas of the State are covered by an organized or voluntary firefighting program. A fire department must certify annually, and include a list of resources every other year, prior to receiving ACT 833 funds. This list of resources is maintained in a database. The Fire Services Board, the Arkansas Division of Emergency Management, and Arkansas Fire Training Academy work together to develop training programs. The Arkansas Statewide Mutual Aid Plan purpose is to provide for the organized and expedient mobilization and operation of resources in response to disasters, weapons of mass destruction incidents, and other extraordinary events on a statewide basis. In addition, fire districts maintain mutual aid agreements with all neighboring districts, and we see this played out numerous times a year when multiple fire departments respond to large events. While there is not a written plan, we believe the actions taken since 1993 and the increased ability to communicate have become the State's plan for fire services. It is our opinion that a written plan, because resources change regularly, would be outdated upon completion. A resource database is much more modern and efficient than a written resource list.*

Equipment Needs

In the 2003 Special Report, ALA noted that the equipment most needed by departments was Automated External Defibrillators (AEDs). Personnel at 8 of the 12 departments providing information about equipment needs for the current report indicated they had a sufficient number of AEDs and few to no problems obtaining them.

However, department personnel did indicate other equipment needs, including self-contained breathing apparatus (SCBAs) and personal protective equipment (PPE, which includes turnouts, boots, or gloves). Multiple departments indicated having “expired” equipment (i.e., equipment deemed “out of date” based on National Fire Protection Association standards) and lack of funding to replace it. Sufficient communications equipment was identified as a challenge for many departments as well. Some had few radios, inoperable radios, and spotty radio coverage and did not have access to high-speed internet. In terms of large equipment, all departments expressed a general need or desire to have newer engines, brush trucks, and other larger equipment. See **pages 12 and 13** for further discussion of departments’ equipment needs.

“Burn Buildings”

In the 2003 Special Report, ALA recommended that the Arkansas Fire Training Academy pursue grants and other funding to construct additional training sites around the State, especially “burn buildings” for training in addressing structure fires,¹ since access to training was a challenge for departments. According to the individuals interviewed for the current report, more burn buildings have been constructed by local municipalities and are used by the municipalities, neighboring fire departments, and the Arkansas Fire Training Academy. However, personnel at 7 of the 15 departments interviewed stated that access to burn buildings remains a barrier to training. Specific challenges include the time and distance needed to travel to the burn buildings, the difficulty in maintaining coverage in the department’s service area while attending a training event, and finding available dates that all personnel can attend.

For more details and information on burn building locations, see the **Fire Training Academy** section on **page 19**.

Surplus Property Distribution

ALA recommended in the 2003 Special Report that a state agency help smaller departments obtain equipment from larger departments and coordinate the distribution of this equipment. This recommendation was specific to small equipment, such as used turnouts, hoses, and shovels.

Based on ALA discussions with personnel at the selected departments across Arkansas, departments either generally utilize new, smaller equipment and donate older equipment to a neighboring fire department or receive used equipment from larger and more funded fire departments. Department personnel interviewed noted no difficulty in finding another department to which they could donate the old property.

However, one department required liability waivers prior to donating used equipment to another department, and one larger department stated that liability is a factor causing some equipment (including turnouts) to be disposed of instead of donated to smaller departments. Additionally, municipalities may be prohibited by law from donating equipment directly to surrounding nonprofit departments.

¹It should also be noted that training in addressing structure fires is not the only training firefighters need, since departments receive a variety of fire-related calls.

Finally, several departments noted that the Rural Fire Protection Program (within the Forestry Division) has both large and small used equipment available with the payment of a service charge. This smaller equipment includes such items as hand tools, PPE, medical supplies, and small generators, which are regularly obtained under the federal surplus property programs discussed elsewhere in this report. However, the Forestry Division stated that it does not have the staff or space to accept equipment from fire departments, although it can help to connect departments requesting small equipment to departments with surplus equipment available.

ISO Rating

The 2003 Special Report noted that the Arkansas Insurance Commissioner issued Directive 3-2002 (May 28, 2002) requiring the quality of fire protection services, as indicated by ISO Ratings, to be used as an “integral component in the development of property rates” and a relevant factor “which insurers must give due consideration....” Since a lower ISO Rating generally reduces fire insurance for a department’s service area, it serves as the primary incentive for fire departments to improve operations.

To update the 2003 Special Report and as requested by the LJAC, **ALA staff sought to acquire the ISO Ratings for all Arkansas fire departments for the most recent period available for comparison to the ratings presented in the 2003 Special Report.** However, when this information was requested from various state agencies, no source of complete information was identified, even when the date of certification was excluded from the request.

When ALA sought to acquire this information directly from ISO, the request was denied, and the company stated that a compilation of ISO ratings for Arkansas fire departments was a “trade secret” not available for publication in this report, as shown in **Appendix C.**

PERSONNEL, TRAINING, AND EQUIPMENT PREPAREDNESS

To gain a broader understanding of the personnel, training, and equipment needs of local fire departments in Arkansas, ALA staff interviewed representatives from 15 fire departments of varying size and category (i.e., municipal, rural, volunteer, paid) located throughout the State. These departments were located in the counties identified in **Exhibit I on page 2.** The needs and issues identified by those local fire departments are summarized below.

Personnel

Volunteerism/Number and Age of Volunteers

Of the 12 departments providing information concerning recruitment of firefighters, 2 mentioned having sufficient staff. Ten departments specifically mentioned that volunteerism and recruiting are challenges, especially among “the younger generation.” The average age of department volunteers is increasing, and the department personnel maintain that it is harder today to recruit younger volunteers than it was in the past. This problem was described as a nationwide issue and not unique to Arkansas or the fire services industry.

Worker’s Compensation

One barrier to recruitment specifically mentioned by department personnel was worker’s compensation benefits for volunteer firefighters. If a volunteer firefighter is injured while performing duties for the volunteer fire department and unable to work at his or her primary, salaried job, then the amount of compensation for lost wages is \$20 per week. Personnel interviewed at two fire departments mentioned that people interested in fire services had asked about worker’s compensation, and the lack of available benefits contributed to the individual’s decision not to volunteer.

Junior Firefighting Program

To increase recruitment, one department mentioned the desire to implement a junior firefighting program in Arkansas, but stated there is a perceived barrier to recruiting minors. According to the chief at this department, the Arkansas Fire Training Academy does not allow minors to participate in and receive credit for any trainings attended. However, the chief maintained that involving high school students could motivate them to continue in a fire services career or provide additional career opportunities upon graduation. Furthermore, college credit could be provided for trainings, if properly implemented. Prior to implementation of such a program, both the safety of minors and level of training being provided would need to be addressed.

Live-In Program

Three individuals interviewed were familiar with or mentioned a “live-in” program as an option for departments to increase volunteerism. In a live-in program, an individual is provided free or reduced lodging at the department’s fire station in return for responding to fire calls, which are sometimes limited to pre-arranged hours. These programs are often offered to local college students. Two departments in Arkansas currently offer this benefit to volunteers: Beaver Lake and Crystal fire departments.

Individuals interviewed mentioned two departments in Arkansas that offer this benefit to volunteers; however, staff at these departments were not among those interviewed by ALA staff. Staff at one department mentioned that implementing a similar program is part of its 10-year plan.

Incentivizing and Motivating Volunteerism

As previously discussed, volunteerism was consistently noted as a challenge for fire departments. One fire chief interviewed recently attended training to assist with recruiting and retaining firefighters. During discussions with ALA staff, this individual and others offered the following recommendations for department action, not previously mentioned in this report:

- Improving the marketing of benefits already offered:
 - ⇒ Retirement benefits (although not a focus for some younger volunteers).
 - ⇒ Tax incentives (e.g., a deduction for certain unreimbursed firefighting expenses identified in Ark. Code Ann. § 26-51-458).
 - ⇒ College credit for certain trainings.
 - ⇒ Emergency medical services and training (especially since this is the primary service provided by some departments).
- Offering greater financial benefits:
 - ⇒ Partnering with local businesses to support the work of the volunteers through contributions to the department or volunteerism programs to encourage employee work/life balance.
 - ⇒ Developing ways to compensate volunteers without becoming a “paid” department (e.g., providing fuel incentives, offering per-call payments, developing point systems that go toward receiving a percentage of total funding at the end of the year, allocating a dollar maximum per volunteer, and paying based upon the percentage of service calls to which the volunteer responds).
- Continuously and actively recruiting members to the fire service.
- Attending trainings in recruitment and retention.

Training

Training Opportunities

Regarding opportunities for training, the majority of department personnel responded positively, but several specifically requested that more local training be brought to the departments. Personnel at one department mentioned difficulty in obtaining wildland fire training from the Arkansas Forestry Commission due to lack of Commission resources.

Even when training opportunities were not a challenge, three departments mentioned difficulty in getting volunteer firefighters to attend trainings, which could be addressed in part with finding additional ways to incentivize attendance. For example, one department paid volunteers \$25 for meeting the annual training requirement. Other departments mentioned having food available to assist with attendance at training events.

Finally, personnel at one department stated that the level of training required of volunteer firefighters should be increased. This individual maintained that Arkansas is lagging behind neighboring states in the level of training required for volunteer and certified firefighters.

Training Officer

To receive Act 833 funding, a department must have a certified training officer to provide regular training to department personnel. Of the nine departments that provided information about training officers, three mentioned problems retaining a training officer or recently losing their training officer due to retirement or job transfer. Furthermore, personnel at one department added that the certification process is time consuming, and the fulfilling the duties of the position can be difficult.

Small Equipment

Automated External Defibrillators (AEDs)

In the 2003 Special Report, one of the concerns noted for all fire departments was insufficient AEDs on hand. Of 12 departments providing information for the current report concerning equipment needs, 8 did not indicate a need for or problems obtaining AEDs. However, 2 departments identified the need for more AEDs, 1 stated that these items are always needed (even though the department responds to few medical calls), and 1 stated that the single AED on hand was broken.

Communication

Of 11 departments providing information concerning communication, 5 provided positive responses regarding equipment availability and reliability as well as radio coverage. However, among 3 of these 5 departments, 1 had no AWIN² radios on hand. Furthermore, 2 had a single AWIN radio, with 1 stating that the AWIN radio was unreliable and needed to be replaced.

Among the remaining 6 departments, communication problems mentioned included spotty radio coverage, the department's slow process for replacing radios, and frequent use of cell phones by volunteers for communicating about fire calls due to poor radio coverage. One department mentioned that no volunteers have radios, and even the cell phone coverage in the service area is substandard. Finally, one of these six departments had AWIN radios, but they did not work. Personnel from this department added that volunteers had to use personal cellphones during calls related to motor vehicle accidents to communicate with the police.

²The Arkansas Wireless Information Network (AWIN) is a statewide communications system used by first responders.

Large Equipment

All departments expressed a general need or desire to have newer engines, brush trucks, and other larger equipment. However, the same equipment or need was not expressed across all departments, as some fight more structure fires and need fire engines while others fight more wildland fires and need brush trucks. Furthermore, one department that handles numerous medical calls expressed a need for new extrication equipment.

However, personnel at all departments identified the already high and rising cost of firefighting equipment. Although personnel at various departments mentioned obtaining equipment from the Forestry Division, the supply of used vehicles did not match the demand or needs of the departments, as the Division has little equipment currently available.

Finally, three municipal departments mentioned the five-year limitation on loans (Ark. Const. amend. 78, § 2) as a barrier to purchasing equipment needed for the department. In addition, one municipality noted the previous legal barrier to donating used firefighting equipment directly to a neighboring nonprofit department in conflict with Ark. Const. art. 12, § 5 and Ark. Code Ann. § 14-42-108(b), although donating the same equipment to another municipal fire department would have been legal.

Firefighter Safety Equipment

Of 12 departments providing information concerning equipment needs, 5 indicated no needs or problems with self-contained breathing apparatus (SCBAs) or PPE (which includes turnouts, boots, or gloves). However, 2 departments attributed the ability to buy these necessary pieces of equipment to grants received by the county or from the federal government, which are not a consistent funding source.

Seven departments noted issues with turnouts or SCBAs. Four indicated that 50% or more of this equipment was out of date but still being utilized by volunteers. Personnel at one department mentioned that all of the department's SCBAs will expire in 2022, and because the cost to replace all of the SCBAs is estimated at 80% of the department's annual revenue, the only option is to apply for, and hopefully receive, a federal grant.

The reporting of fire incidents to a national database is generally an eligibility requirement for federal grants, and the lack of high-speed internet hampers the ability of some departments to report such incidents.³ Additionally, the issue with expired equipment is not unique or unusual in Arkansas.

When discussing out-of-date equipment, department personnel raised the following concerns:

- Potential worker's compensation coverage issues if expired equipment is being utilized when an injury occurs.
- Liability issues for a department providing expired equipment to a lesser-equipped department.⁴

³ See the *National Fire Incident Reporting System (NFIRS)* section on **page 20** for more details.

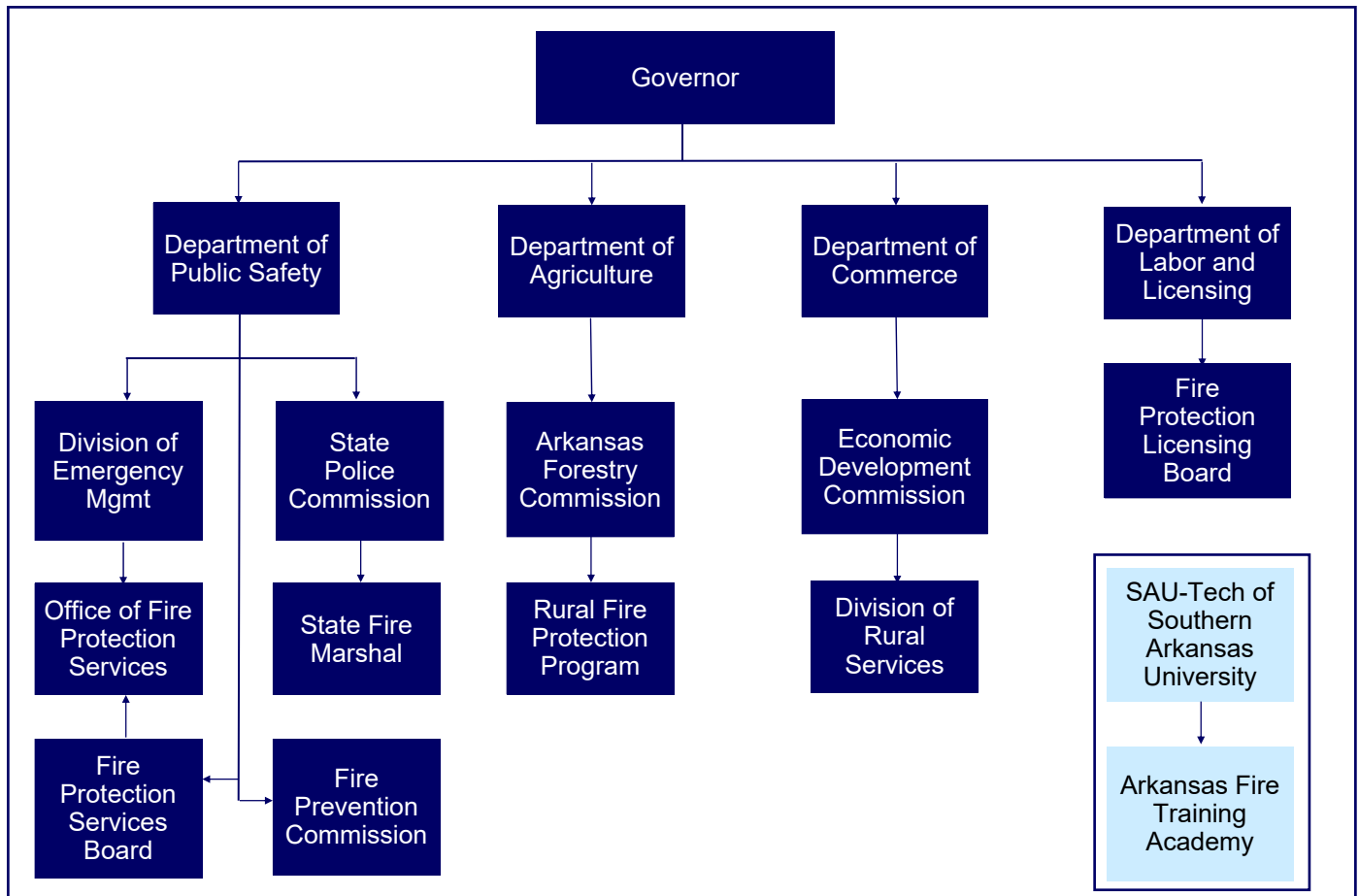
⁴ It should be noted that the State of Missouri has a statute that affords legal protection to fire departments providing equipment to other departments.

STATE ORGANIZATION OF FIRE SERVICES

The organization of fire services in the State is divided among eight distinct boards, offices, and divisions⁵ are illustrated in **Exhibit IV**. Each entity serves a different function and provides oversight for a different area of fire services, as discussed in the sections that follow.

Exhibit IV

Organization of Fire Services in Arkansas



Source: Arkansas Code Annotated

Office of Fire Protection Services

The Office of Fire Protection Services (Office), as established by Ark. Code Ann. § 20-22-805, serves as the point of contact for the State of Arkansas concerning federal, state, and local fire services-related programs and services. One of the Office’s responsibilities is assisting departments with acquiring and maintaining Act 833 funding, with its primary role being to certify fire departments annually.⁶ Additionally, the Office supports the Fire Protection Services Board

⁵ Since the 2003 Special Report, three relevant pieces of legislation have transferred various fire services boards and commissions to other Departments of state government. See Act 1459 of the Regular Session of 2003, Act 8 of the First Extraordinary Session of 2015, and Act 910 of the Regular Session of 2019.

⁶ See the **Act 833 Funding** section on **pages 3 through 4** for more information.

in its administrative functions and directives. The Office is also charged, by Act 1303 of 1993 (Ark. Code Ann. § 20-22-1006), with developing a comprehensive program for the coordination of resources of the State and its local governments into a plan to be referred to as the Arkansas Fire Protection Services Resources Plan, as discussed on **pages 7 and 8** of this report.

Fire Protection Services Board

The Fire Protection Services Board (Board) advises the Director of the Arkansas Division of Emergency Management and the Office of Fire Protection Services on matters pertaining to the operation of fire services, firefighter and fire department certification, and standards related to fire services in Arkansas. Additionally, the Board advises the Director of the Arkansas Fire Training Academy (Academy) in matters related to training and certification of fire services personnel and advises the President of Southern Arkansas University regarding the appointment and retention of the Director of the Academy.

Arkansas Fire Prevention Commission

The Arkansas Fire Prevention Commission (Commission) is made up of fire prevention professionals, volunteers, and members of the general public who wish to prevent loss of life and property to fire and fire-related incidents. The Commission's goal is to bring public awareness to the dangers of fires in homes and occupied structures and to provide information on how to reduce those risks. The Commission studies fire trends, researches current methods of fire safety, promotes programs that reduce the risks of fire injury, and is required to report the results of these activities annually to the Secretary of the Department of Public Safety and the General Assembly on or before November 30.

Additionally, the Commission has a Community Fire Prevention Grants Program that provides grants to start, enhance, or expand fire and life safety programming, with individual grants capped at \$4,000. The Commission also purchases in bulk and distributes smoke detectors to requesting fire departments. In addition to distributing smoke detectors during calendar years 2020 and 2021, the Commission disbursed \$21,557 in grant funds to local fire departments.

State Fire Marshal

Act 254 of 1955 created the Fire Marshal's Office of the State Police, which is now the State Fire Marshal Office (Office) within the Division of Arkansas State Police. The Office investigates suspicious fires, assists local authorities with investigations, and has access to an accelerant detection canine from the Bureau of Alcohol, Tobacco, Firearms and Explosives (ATF). The Office performs other functions that promote efficient and effective fire prevention and control in the State, including the following:

- Reviewing plans for building projects and assisting local jurisdictions with plan reviews when needed.
- Conducting inspections of state buildings and assisting local jurisdictions with inspections when requested.
- Licensing companies and individuals involved in the fireworks industry.
- Issuing permits for above-ground storage tanks used for combustible, flammable, and hazardous substances.

The Office is also home for the Arkansas State Police Bomb Team. Finally, the Office may review fire protection class code determinations by an advisory organization and determine if the evaluation of fire protection services is reasonable and appropriate. Upon request, the State Fire Marshal may make recommendations to the Insurance Commissioner about filings made to the commissioner concerning fire protection standards.

Rural Fire Protection Program

Established in 1979, the Rural Fire Protection (RFP) Program helps communities organize fire departments and equip and train personnel. The RFP provides the following services:

- Two federal programs that help fire departments with certain equipment needs.
- Wildland suppression training to all fire departments.
- Wildland fire suppression kits to certain departments (by application).
- An interest-free revolving loan program.

Federal Programs

The RFP manages two equipment assistance programs. The first program, **Federal Excess Personal Property (FEPP)**, is reserved for firefighting use, and FEPP equipment is acquired from federal civilian agencies, as well as the United States Department of Defense (DoD). Once the equipment is issued by RFP, the receiving fire department must place the equipment into service within six months and continue using it for the duration of its life or until it is no longer needed. This FEPP equipment is considered “on loan,” and once it is no longer usable or needed by the department, it must be returned to RFP. Ownership always vests with the federal government.

The second program, **Fire Fighter Property (FFP)**, involves property that can only be acquired from the DoD and is available for firefighting *and* other emergency services. The fire department is required to place the equipment into service within six months of receipt and keep the equipment in service for one-year. After fulfilling these requirements, ownership of the equipment passes to the department.

Equipment available through the FEPP and FFP programs may include pick-ups, truck tractors, fire trucks, cargo trailers, generators, medical supplies, PPE, hand tools, etc. All equipment is free to the departments. For the two calendar years ending December 31, 2021, 96 pieces of equipment, valued at \$6,350,947, were loaned to Arkansas departments through the FEPP and FFP programs, as compared to 474 pieces of equipment noted in the 2003 Special Report.

In addition, RFP has an equipment modification shop and auto/diesel mechanics that offer service, repair, and refurbishment of the federal equipment before it is assigned to a fire department. RFP utilizes the Arkansas Department of Corrections to build and install water tanks on trucks and to paint refurbished equipment, as all equipment is required by a cooperative agreement with the United States Department of Agriculture, Forest Service (U.S. Forest Service) to be painted a non-DoD color. The labor for these services is free to the fire departments, which are required to pay for parts. Alternatively, a department may choose to complete the work itself or pay a vendor to prepare the equipment for its intended use.

Wildland Fire Suppression Training and Kits

RFP also administers the Volunteer Fire Assistance Grant for the U.S. Forest Service, which is used to provide (1) **wildland fire suppression training** to all fire departments and (2) **wildland**

fire suppression kits to applying departments annually, which has been done since 2014 in place of the \$500 grants mentioned in the 2003 Special Report. The funds are used to purchase training supplies for the course, which all Arkansas firefighters must complete. A competitive application and scoring process is used to determine departments awarded the wildland fire suppression kits, and departments serving a population of less than 10,000 with 80% of the firefighters being volunteers can apply. The current kit includes wildland PPE, leaf blowers, rakes, backpack pumps, and gloves; additional items are included in varying years as funding is available.

Revolving Loan Fund

RFP also administers a state-funded, interest-free revolving loan fund for fire departments that are (1) at least 75% volunteer and (2) serve a community with a population of 10,000 or less, to purchase firefighting equipment and vehicles. The loan is provided for a maximum amount of \$15,000 over a three-year term.

For the two calendar year period ending December 31, 2021, the revolving loan fund financed 27 loans to departments totaling \$320,259, compared to the 140 loans totaling \$1,107,516 in the 2003 Special Report. A list of the counties with departments receiving financing through the revolving loan fund is presented in **Schedule 3 on pages 47 and 48**.

Firewise USA® Program

Apart from the Rural Services Section and funded by the U.S. Forest Service, the Forestry Division of the Arkansas Department of Agriculture also provides grants to fire departments through the Firewise USA® Program (Firewise Program), which was established in 2002. To participate in the Firewise Program, communities must meet the following requirements:



- Have less than 2,500 structures in the department's corresponding service area.
- Assess at least 80% of the dwelling units within the applicable service area.
- Create a Community Wildfire Protection Plan based upon the assessment.
- Contribute a certain amount of funding or volunteer hours yearly, which must include at least one vegetation removal and one educational outreach project.

Three types of grants are available through the Firewise Program: (1) \$1,000 initial assessment and reassessment grants, (2) a \$2,500 grant for purchasing certain firefighting equipment, and (3) a \$1,000 annual grant for every Firewise community served by the department that continues to meet the program requirements.

A list of the counties with departments receiving grants through the Firewise Program during the past two calendar years is presented in **Schedule 3 on pages 47 and 48**.

Division of Rural Services

The Division of Rural Services (Division) coordinates the funding of rural fire protection grants under two different programs that both also administer other community improvement grants.



Rural Community Grant Program

The Division accepts applications for the Rural Community Grant Program from unincorporated rural areas or incorporated towns with a population of less than 3,000. To receive this grant funding, departments must submit a completed application, a certification letter signed by the county judge or mayor, a resolution adopted by the quorum court or city council, an itemized list of anticipated project costs, letters of support from legislators, copies of the three most recent annual Act 833 expenditure reports, a list of all applicable fire equipment owned by the department, and documentation of the department's ISO Rating. The Division uses three primary criteria in awarding grants:

- Distributing grants throughout the State by ensuring all counties submitting applications are represented.
- Ranking the priority of grants based on need, which includes an assessment of the department's ISO Rating.
- Ensuring the department's request is matched by the applicable capacity (e.g., a fire station sufficient to house a fire truck or new equipment purchased).

The maximum grant award is \$15,000 and requires local matching funds at a ratio of 50/50. Matching funds may be comprised of in-kind labor, in-kind materials, and cash, which must be available at the time of application. Act 833 funds may also be considered matching funds for the grants. In the past, rural fire protection grant funding has been used to construct new fire stations and additional bays for existing stations and to purchase turnouts, communications equipment, fire trucks, extrication equipment, and brush trucks.

Rural Services Block Grant Program

The Division also administers the Rural Services Block Grant Program, which is made possible through a partnership with the Arkansas Economic Development Commission (AEDC) Grants Division and is funded with federal Community Development Block Grant funds from the United States Department of Housing and Urban Development.

Applicants are eligible for up to \$75,000. The match for this grant is 10% and may be comprised of in-kind labor, in-kind materials, or cash. Grants are available to incorporated towns and rural communities with a population of less than 3,000. Additionally, at least 51% of the persons benefitting from the grant must be considered low- to moderate-income. Funds can be utilized for new construction or renovation of community centers, fire stations, or multi-purpose buildings, as well as the purchase of fire trucks (pumper, tanker, brush, or certain service trucks).

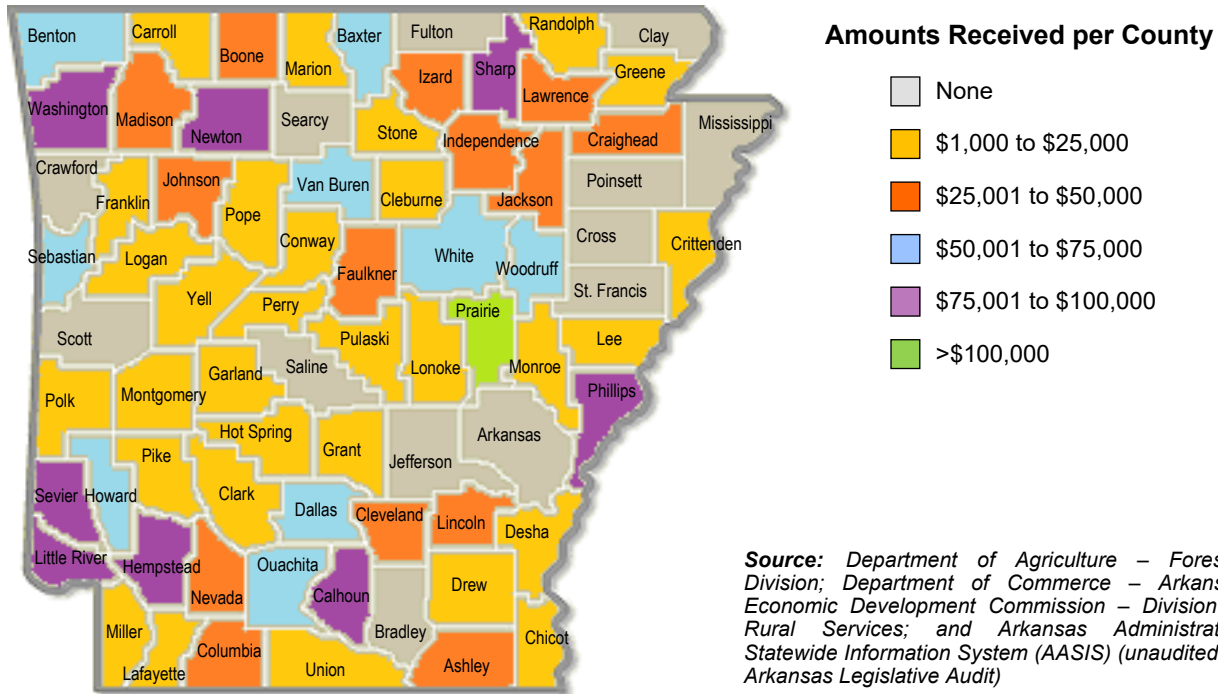
Exhibit V on page 19 identifies the counties with communities receiving grant awards or loans during calendar years 2020 and 2021. A complete list of grant and loan awards by county for calendar years 2020 and 2021 vs. calendar years 2000 and 2001 is presented in **Schedule 3 on pages 47 and 48**.

Arkansas Fire Protection Licensing Board

The Arkansas Fire Protection Licensing Board was created by Act 743 of 1977 to monitor the installation and servicing of portable fire extinguishers, fixed fire suppression systems, and fire sprinkler systems, as well as to register and license businesses and individuals who provide such services. The goal of the licensing program is to minimize personal injury and property damage, which might result from improperly installed or improperly maintained fire-extinguishing systems.

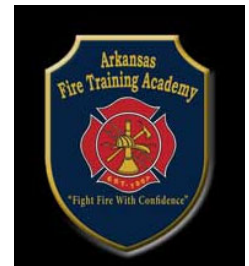
Exhibit V

Counties with Communities Receiving Rural Fire Protection Loans, Forestry Division Firewise® Grants, and Division of Rural Services Grants For Calendar Years 2020 and 2021



Fire Training Academy

The Arkansas Fire Training Academy (Academy) serves as a resource for all fire departments and related organizations by providing professional education and training in firefighting, hazardous materials, and emergency medical services. The Academy employs the practices and standards established by state and national authorities, as well as state-of-the-art techniques of fire service management through equipment and safety training. The Academy is accredited by the International Fire Service Accreditation Congress, National Board on Fire Service Professional Qualifications, and Arkansas Department of Health, which allows the Academy to certify individuals as Firefighter I, Firefighter II, Driver/Operator, Hazardous Materials-Awareness, Hazardous Materials-Operations, Instructor I, Fire Officer Levels I and II, and Emergency Medical Technician-Basic Level. The Academy is a part of the Southern Arkansas University (SAU) system and has an administrative office, a main campus/training site, and a recently constructed dormitory located east of Camden, near the SAU-Tech campus (Camden Campus).



Training Sites and Programs

Currently, the Academy has one active satellite-training site in Jonesboro (Jonesboro Campus) and two inactive training sites in Lincoln and Marshall. These two sites are inactive because it is difficult for personnel and equipment to be out of a fire department’s district for an extended length of time.⁷ Furthermore, the Academy owns part of the site being utilized by the Black River Technical College (College) for instruction, and the program is operated in partnership between the Academy and College.

⁷ These two inactive sites are currently being utilized by other governmental entities: the Washington County Office of Emergency Management and Arkansas Forestry Commission.

Both the Camden Campus and Jonesboro Campus have burn buildings that are owned by the Academy and utilized for training.⁸ As noted in the 2003 Special Report, the experience gained from training in real-life situations simulated in a burn building is important for fighting structure fires; however, gaining access to a burn building for training is a challenge for many departments. Additionally, not all fire departments are called upon to regularly fight structure fires, and the level of experience of individual firefighters varies by department.

Although burn buildings and training props generally require extensive, constant, and sometimes expensive maintenance, some municipalities have constructed burn buildings that provide training opportunities to their fire department and may invite neighboring fire departments to the trainings. Additionally, the Academy utilizes municipal-owned burn buildings for “off-campus” trainings. However, before the Academy can use a structure for training, it must be inspected and meet stringent requirements for training scenarios that meet certification standards.⁹ Furthermore, the Academy has divided the State into five regions with a lead instructor assigned to provide training in each region.

One barrier to rural fire departments utilizing the municipal-owned buildings for training is the varying local restrictions on the building’s usage, which may include liability waivers signed by each agency or participant, the building’s owner being present for any trainings offered or providing the required instruction, and the specific hours available for the structure’s usage.

During ALA discussions with Academy personnel, mobile training units or “props” were mentioned as a possible means of enhancing departments’ ability to access training. Mobile props can range from basic roof entry or hydraulic trailers to more advanced and complete burn buildings that look more like a semi-trailer. Shown at right is an example of a mobile training unit owned by the City of Searcy.



The cost of the more advanced, complete burn buildings ranges from \$200,000 to \$300,000 each and requires an additional \$50,000 to \$100,000 for a vehicle to pull them. If mobile props could be purchased and housed at various locations throughout the State, the Academy could potentially deliver on-site trainings to more firefighters and allow departments to use their own equipment in the training exercises.

National Fire Incident Reporting System (NFIRS)

In addition to offering trainings, the Academy supports fire departments by maintaining the State’s National Fire Incident Reporting System (NFIRS), which allows participating departments to be eligible for certain federal grants. Currently, 520 of the State’s approximate 951 fire departments report fire calls through NFIRS due to new system requirements, including high-speed internet. These requirements were put in place throughout the country by the United States Fire Administration (a division of the Federal Emergency Management Agency [FEMA]).

⁸ The Camden Campus has two burn buildings, but only one can be utilized. The unutilized building (commonly referred to as the “smoke house”) is beyond its expected lifespan and has been condemned

⁹ Buildings meeting these requirements are located in Baxter County/Midway, Black River Technical College, Conway, Fayetteville, Fort Smith, Jacksonville, Little Rock, and White River Technical College. There may be more structures meeting the requirements that the Academy has not inspected or of which the Academy is not aware.

ISO RATING SYSTEM

Insurance Services Office, Inc. (ISO), is a subsidiary of Verisk Analytics, a publicly held company. In addition to other services and information sold to insurance companies, ISO evaluates and assigns fire insurance classifications for fire protection services and facilities in a community, which is called the Public Protection Classification (commonly known as an ISO Rating). The classification is used by insurance companies to establish property and casualty insurance rates for buildings. The classification is determined by an ISO evaluator who conducts a field review of the fire protection facilities in the community and compares them with the standards contained in the ISO's Fire Suppression Rating Schedule (FSRS). The ISO Rating builds from Class 10 (signifying little or no recognized protection) to Class 1 (the highest).

To receive a **Class 10 rating**, a community must, at minimum, have a permanently organized fire department with a designated, responsible person (typically the chief), and the department must have a defined boundary by either the governing body or some form of contract or resolution.

To receive a **Class 9 rating**, a department must:

1. Have at least four firefighters who respond, on initial alarm, to all reported structure fires.
2. Ensure that each firefighter receives at least three hours of training every three months.
3. Have communications capacity to receive fire alarms and dispatch firefighters.
4. Have at least one firefighting apparatus (with a permanently mounted pump meeting certain output and storage minimums).
5. House the firefighting apparatus to protect it from the weather.

Furthermore, the department must receive enough points (at least 100) from the FSRS criteria to receive a Class 9, and the FSRS criteria include records to support the training, personnel, and fire calls and certain equipment with the department. For example, 16 points are awarded for having four self-contained breathing apparatus (SCBA), and additional points are awarded for having spare SCBA cylinders.

For the department to receive a **Class 8 rating**, the department must also be within a community that provides a sufficient water supply level (250 gallons per minute [gpm] for a 2-hour duration). If the water supply is insufficient in the community, the department can receive at most a Class 8B, but this class rating still requires a certain level of water supply (200 gpm for 20 minutes beginning within 5 minutes of the first arriving engine) and improved firefighting equipment, training, and response levels.

During interviews with representatives of local fire departments, ALA staff requested the date of the most recent ISO Rating. Based upon responses provided during the interviews, the time that has passed since departments' last ISO Rating review ranged from 2 years to 36 years, and the average "age" of the ISO Rating for Arkansas fire departments was 8.6 years. Department personnel identified several hindrances to seeking an ISO Rating review, including the time-consuming nature of the process, insufficient water supply levels in their communities, and the ISO requirement to keep on hand certain items that departments rarely use.

As previously mentioned, the ISO Rating (or class certification) serves as the primary incentive for fire departments to improve operations and ALA's request to obtain this information was denied. See **Appendix C**.

CONCLUSION

ALA staff updated the information presented in the 2003 Fire Safety Special Report and determined the Department of Public Safety has not compiled and published the Arkansas Fire Protection Services Resources Plan, as directed by legislation. ALA was unable to obtain an updated ISO Rating for each fire department because of ISO, Inc.'s, claim of proprietary information.

Schedule 1

Act 833 Funding by County
Allocated in Calendar Year 2001 and Distributed in Calendar Year 2021
(Totals may not sum due to rounding.)

County	County Population in 2020	Act 833 of 1991 Funding Percentages	Calendar Year 2001 Allocated Funding	Calendar Year 2021 Distributed Funding
Arkansas	17,149	0.78%	\$ 54,838	\$ 127,531
Ashley	19,062	1.39%	97,724	224,859
Baxter	41,627	1.78%	125,143	291,031
Benton	284,333	3.86%	271,378	631,113
Boone	37,373	1.46%	102,645	238,711
Bradley	10,545	0.52%	36,559	85,020
Calhoun	4,739	0.51%	35,856	83,385
Carroll	28,260	0.97%	68,196	158,596
Chicot	10,208	0.51%	35,856	83,385
Clark	21,446	1.13%	79,445	184,756
Clay	14,552	1.10%	77,336	178,232
Cleburne	24,711	1.11%	78,039	159,063
Cleveland	7,550	0.66%	46,401	107,911
Columbia	22,801	1.24%	87,178	202,741
Conway	20,715	1.04%	73,117	230,154
Craighead	111,231	2.91%	204,588	475,787
Crawford	60,133	1.98%	139,204	323,732
Crittenden	48,163	1.32%	92,803	253,151
Cross	16,833	0.84%	59,048	109,749
Dallas	6,482	0.45%	31,637	73,575
Desha	11,395	0.71%	49,917	116,086
Drew	17,350	0.80%	56,244	91,560
Faulkner	123,498	2.30%	161,702	376,052
Franklin	17,097	0.97%	68,196	162,749
Fulton	12,075	0.84%	59,056	137,341
Garland	100,180	3.12%	219,352	510,123
Grant	17,958	1.13%	79,445	160,368
Greene	45,736	1.39%	97,724	218,541
Hempstead	20,065	1.89%	132,877	309,017
Hot Spring	33,040	1.46%	102,645	238,711
Howard	12,785	0.75%	52,729	122,626
Independence	37,938	1.90%	133,580	288,894
Izard	13,577	0.91%	63,978	148,786
Jackson	16,755	0.95%	66,790	155,326
Jefferson	67,260	2.32%	163,108	379,322
Johnson	25,749	1.05%	73,820	155,209
Lafayette	6,308	0.71%	49,917	116,086
Lawrence	16,216	0.96%	67,493	142,651
Lee	8,600	0.73%	51,323	109,891
Lincoln	12,941	1.12%	78,742	128,185

Schedule 1 (continued)

County	County Population in 2020	Act 833 of 1991 Funding Percentages	Calendar Year 2001 Allocated Funding	Calendar Year 2021 Distributed Funding
Little River	12,026	0.77%	\$ 54,135	\$ 125,896
Logan	21,131	1.06%	74,523	173,311
Lonoke	74,015	1.70%	119,513	238,941
Madison	16,521	0.95%	66,790	155,326
Marion	16,826	1.00%	70,305	143,063
Miller	42,600	1.44%	101,239	235,441
Mississippi	40,685	1.77%	124,440	289,396
Monroe	6,799	0.53%	37,262	79,220
Montgomery	8,484	0.66%	46,401	95,920
Nevada	8,310	0.58%	40,777	94,395
Newton	7,225	0.67%	47,104	98,920
Ouachita	22,650	1.37%	96,318	191,188
Perry	10,019	0.62%	43,589	101,370
Phillips	16,568	1.12%	78,742	183,121
Pike	10,171	0.87%	61,165	142,246
Poinsett	22,965	1.14%	80,148	186,391
Polk	19,221	1.01%	71,008	165,136
Pope	63,381	1.73%	121,628	282,856
Prairie	8,282	0.83%	58,353	142,148
Pulaski	399,125	5.99%	421,128	979,370
Randolph	18,571	0.96%	67,493	143,097
Saline	123,416	3.00%	210,915	490,502
Scott	9,836	0.59%	41,480	96,465
Searcy	7,828	0.73%	51,323	59,677
Sebastian	127,799	2.06%	144,829	336,812
Sevier	15,839	0.82%	57,650	134,071
Sharp	17,271	1.30%	91,397	212,551
St. Francis	23,090	1.45%	101,942	237,076
Stone	12,359	0.77%	54,135	125,896
Union	39,054	2.01%	141,313	305,620
Van Buren	15,796	1.18%	82,960	175,447
Washington	245,871	3.46%	243,256	565,713
White	76,822	2.71%	190,527	443,205
Woodruff	6,269	0.47%	33,043	87,641
Yell	20,263	1.11%	78,039	181,486
Totals	3,011,524	100%	\$ 7,030,496	\$ 15,988,920

Percentages, established by Act 833, are used by the Department of Finance and Administration (DFA) to allocate funds to the 75 counties. Funds are then distributed by DFA based on Quorum Court resolutions on file.

Source: Arkansas Legislative Audit 2003 Special Report, United States Census Bureau, and Arkansas Administrative Statewide Information System (unaudited by Arkansas Legislative Audit)

Schedule 2

**Act 833 Funding by Fire Department
Distributed in Calendar Year 2021**

(Totals may not sum due to rounding.)

County	Fire Department	Calendar Year 2021 Distributed Act 833 Funding
Arkansas	Alcorn Rural	\$ 8,519
Arkansas	Almyra	11,707
Arkansas	Casscoe	8,519
Arkansas	Crocketts Bluff	8,519
Arkansas	De Witt	15,941
Arkansas	Gillett	11,707
Arkansas	Humphrey	8,366
Arkansas	One Horse (Bayo Meto)	8,519
Arkansas	St. Charles	11,707
Arkansas	Stuttgart	25,506
Arkansas	Tichnor	8,519
Arkansas County Total		\$ 127,531
Ashley	Crossett	\$ 58,552
Ashley	Fountain Hill	9,419
Ashley	Hamburg	43,764
Ashley	Milo	16,362
Ashley	Montrose	8,355
Ashley	North Crossett	32,586
Ashley	Portland	9,327
Ashley	Unity/Frost Prairie	10,345
Ashley	West Crossett	21,616
Ashley	Wilmot	14,534
Ashley County Total		\$ 224,859
Baxter	Big Flat	\$ 15,845
Baxter	Buford Community	15,845
Baxter	Clarkridge Community	15,845
Baxter	Cotter	15,845
Baxter	Cotter-Gassville Rural	15,845
Baxter	Gamaliel	15,845
Baxter	Gassville	15,845
Baxter	Grover Township	15,845
Baxter	Hand Cove	15,845
Baxter	Henderson	15,845
Baxter	Lone Rock	15,845
Baxter	Midway	15,845
Baxter	Mountain Home	15,845
Baxter	Norfolk	15,845
Baxter	Northeast Lakeside	15,845
Baxter	Oakland/Promise Land	5,821
Baxter	Rodney/Jordan	15,845
Baxter	Salesville	15,845
Baxter	Tracy Area	15,845
Baxter County Total		\$ 291,031

Schedule 2 (continued)

County	Fire Department	Calendar Year 2021 Distributed Act 833 Funding
Benton	Beaver Lake	25,245
Benton	Bella Vista	25,245
Benton	Bentonville	25,245
Benton	Cave Springs	25,245
Benton	Centerton	25,245
Benton	Decatur	25,245
Benton	Gallatin	25,245
Benton	Gentry	25,245
Benton	Gravette	25,245
Benton	Hickory Creek	25,245
Benton	Highfill	25,245
Benton	Highway 94 East	25,245
Benton	Little Flock	25,245
Benton	Lowell	25,245
Benton	Maysville	25,245
Benton	NEBCO	25,245
Benton	Pea Ridge	25,245
Benton	Piney Point	25,245
Benton	Pleasure Heights	25,245
Benton	Rocky Branch	25,245
Benton	Rogers	25,245
Benton	Siloam Springs	25,245
Benton	Springdale	25,245
Benton	Sulphur Springs	25,245
Benton County Total		\$ 631,113
Boone	Alpena	\$ 18,362
Boone	Bergman	18,362
Boone	Capps-Batavia	18,362
Boone	Cottonwood	18,362
Boone	Diamond City	18,362
Boone	Harmon	18,362
Boone	Harrison	18,362
Boone	Hilltop	18,362
Boone	Krooked Kreek	18,362
Boone	Lead Hill	18,362
Boone	Omaha	18,362
Boone	Valley Springs	18,362
Boone	Zinc	18,362
Boone County Total		\$ 238,711
Bradley	Bradley	\$ 17,004
Bradley	County Line	8,502
Bradley	Hermitage	17,004
Bradley	Pleasantville	8,502
Bradley	Sumpter	8,502
Bradley	Warren	25,506
Bradley County Total		\$ 85,020

Schedule 2 (continued)

County	Fire Department	Calendar Year 2021 Distributed Act 833 Funding
Calhoun	Caney Creek	\$ 13,898
Calhoun	Chambersville	13,898
Calhoun	Hampton	13,898
Calhoun	Harrell	13,898
Calhoun	Thornton	13,898
Calhoun	Tinsman	13,898
Calhoun County Total		\$ 83,385
Carroll	Alpena	\$ 9,329
Carroll	Berryville	18,658
Carroll	Eureka Springs	18,658
Carroll	Grassy Knob	18,658
Carroll	Green Forest	18,658
Carroll	Holiday Island	18,658
Carroll	Inspiration Point	18,658
Carroll	Oak Grove	18,658
Carroll	South Carroll County	18,658
Carroll County Total		\$ 158,596
Chicot	Dermott	\$ 22,236
Chicot	Eudora	22,236
Chicot	Lake Village	22,236
Chicot	Lakeport	8,339
Chicot	Ross Van Ness-Wellford	8,339
Chicot County Total		\$ 83,385
Clark	Alpine	\$ 9,546
Clark	Amity	9,546
Clark	Arkadelphia	55,427
Clark	Beime	9,546
Clark	Caddo Valley	9,546
Clark	Curtis	9,546
Clark	DeGray	9,546
Clark	East Clark County	9,546
Clark	Gum Springs	9,546
Clark	Gurdon	14,780
Clark	Hollywood	9,546
Clark	Kansas	9,546
Clark	Okolona	9,546
Clark	Whelen Springs	9,546
Clark County Total		\$ 184,756
Clay	Coming	\$ 30,575
Clay	Greenway	36,150
Clay	McDougal	12,590
Clay	Peach Orchard	12,590
Clay	Piggott	30,575
Clay	Pollard	12,590
Clay	Rector	30,575
Clay	Success	12,590
Clay County Total		\$ 178,232

Schedule 2 (continued)

County	Fire Department	Calendar Year 2021 Distributed Act 833 Funding
Cleburne	Concord	\$ 10,953
Cleburne	Cove Creek/Pearson	16,429
Cleburne	Drasco/Tannenbaum/Silver Ridge	16,429
Cleburne	Fairfield Bay (Van Buren Co)	250
Cleburne	Greers Ferry	16,429
Cleburne	Hopewell	16,429
Cleburne	Pine Snag/Lobo	16,429
Cleburne	Prim	16,429
Cleburne	Quitman	16,429
Cleburne	Tumbling Shoals/Ida	16,429
Cleburne	Wilburn	16,429
Cleburne County Total		\$ 159,063
Cleveland	County Line	\$ 8,301
Cleveland	Highway 133	8,301
Cleveland	Highway 212 Substation	8,301
Cleveland	Highway 35 South	8,301
Cleveland	Kingsland	8,301
Cleveland	New Edinburg	8,301
Cleveland	New Edinburg #2	8,301
Cleveland	Pansy	8,301
Cleveland	Rison	8,301
Cleveland	Rye	8,301
Cleveland	Woodlawn	8,301
Cleveland	Woodlawn # 2	8,301
Cleveland	Y Community	8,301
Cleveland County Total		\$ 107,911
Columbia	79 South	\$ 12,556
Columbia	Bussey/Sharman	12,556
Columbia	Calhoun	12,556
Columbia	Emerson	12,924
Columbia	Four Communities	12,556
Columbia	Macedonia/Dorcheat	12,556
Columbia	Magnolia	24,133
Columbia	McNeil	13,072
Columbia	McNeil Rural	12,556
Columbia	Mt. Vernon	12,556
Columbia	Rudds Crossing	12,556
Columbia	Taylor	13,122
Columbia	Village	12,556
Columbia	Waldo	13,928
Columbia	Walkerville	12,556
Columbia County Total		\$ 202,741

Schedule 2 (continued)

County	Fire Department	Calendar Year 2021 Distributed Act 833 Funding
Conway	Birdtown	\$ 8,232
Conway	Blackwell	8,232
Conway	Center Ridge	8,232
Conway	Cleveland	8,232
Conway	Hill Creek	8,232
Conway	Jerusalem	8,232
Conway	Mennifee	8,232
Conway	Morrilton	58,166
Conway	Oppelo	5,709
Conway	Overcup	8,232
Conway	Petit Jean Mountain	8,232
Conway	Plumerville	67,501
Conway	Saint Vincent	8,232
Conway	Sardis	8,232
Conway	Springfield	8,232
Conway County Total		\$ 230,154
Craighead	Bay	\$ 24,741
Craighead	Bono Fire District	37,111
Craighead	Brookland Fire District	24,741
Craighead	Caraway	24,741
Craighead	Cash	37,111
Craighead	Jonesboro	154,155
Craighead	Lake City	24,741
Craighead	Lake City District #1	24,741
Craighead	Monette	49,482
Craighead	Philadelphia Fire District	24,741
Craighead	Southridge Fire District	24,741
Craighead	Valley View Fire District	24,741
Craighead County Total		\$ 475,787
Crawford	Alma	\$ 28,707
Crawford	Cedarville	7,664
Crawford	District # 1	50,462
Crawford	District # 2	14,625
Crawford	District # 3	23,042
Crawford	District # 4	6,661
Crawford	District # 5	28,772
Crawford	District # 6	22,653
Crawford	District # 7	14,398
Crawford	District # 8	3,359
Crawford	District # 9	3,909
Crawford	Van Buren	119,481
Crawford County Total		\$ 323,732

Schedule 2 (continued)

County	Fire Department	Calendar Year 2021 Distributed Act 833 Funding
Crittenden	Anthonyville	\$ 16,602
Crittenden	Crawfordsville	16,602
Crittenden	Earle	16,602
Crittenden	Edmondson	16,602
Crittenden	Gilmore	16,602
Crittenden	Heafer	16,602
Crittenden	Horseshoe Lake	16,602
Crittenden	Jennette	16,602
Crittenden	Marion	16,602
Crittenden	Turrell	87,135
Crittenden	West Memphis	16,602
Crittenden County Total		\$ 253,151
Cross	Bay Village	\$ 8,158
Cross	Cherry Valley	14,091
Cross	Parkin	21,164
Cross	Wynne	66,336
Cross County Total		\$ 109,749
Dallas	Cooterneck	\$ 14,014
Dallas	Fordyce	9,927
Dallas	Holly Springs	9,927
Dallas	Manning	9,927
Dallas	Ouachita	9,927
Dallas	Sparkman	9,927
Dallas	Temperence Hill	9,927
Dallas County Total		\$ 73,575
Desha	Arkansas City	\$ 21,235
Desha	Dumas	25,482
Desha	Halley	21,235
Desha	Kelso-Rohwer	21,235
Desha	Tillar	5,663
Desha	Watson	21,235
Desha County Total		\$ 116,086
Drew	Collins-Commento	\$ 13,080
Drew	Lacey/Ladelle	13,080
Drew	Monticello	26,160
Drew	Selma	13,080
Drew	Tillar	13,080
Drew	Winchester	13,080
Drew County Total		\$ 91,560

Schedule 2 (continued)

County	Fire Department	Calendar Year 2021 Distributed Act 833 Funding
Faulkner	Beaverfork	\$ 15,087
Faulkner	Cato	10,373
Faulkner	Centerville	10,373
Faulkner	Conway	117,304
Faulkner	Damascus	16,973
Faulkner	Enola	12,258
Faulkner	Greenbrier	22,631
Faulkner	Guy	12,258
Faulkner	Highway 286 East	12,258
Faulkner	Hilltop	12,258
Faulkner	Holland	11,316
Faulkner	Liberty	14,710
Faulkner	Mayflower	22,631
Faulkner	Mount Vernon	12,258
Faulkner	Pine Village	12,258
Faulkner	Quitman	377
Faulkner	Saltillo	12,258
Faulkner	Twin Groves	6,601
Faulkner	Vilonia	22,631
Faulkner	Wescon	6,601
Faulkner	Wooster	12,636
Faulkner County Total		\$ 376,052
Franklin	Altus	\$ 4,631
Franklin	Altus Rural	12,101
Franklin	Barnes Rural	9,452
Franklin	Branch	3,204
Franklin	Branch Rural	9,452
Franklin	Cecil Rural	9,452
Franklin	Charleston	22,695
Franklin	Charleston Rural	9,452
Franklin	Oak Bend-Etna Rural	9,452
Franklin	Ozark	35,526
Franklin	Pleasant View Rural	9,452
Franklin	South Ozark-Webb City Rural	18,427
Franklin	Watalula Rural	9,452
Franklin County Total		\$ 162,749

Schedule 2 (continued)

County	Fire Department	Calendar Year 2021 Distributed Act 833 Funding
Fulton	9 Mile Ridge	\$ 12,486
Fulton	Byron	12,486
Fulton	Camp	12,486
Fulton	Cherokee Village	4,161
Fulton	Glencoe	12,486
Fulton	Hardy	4,161
Fulton	Mammoth Spring	12,486
Fulton	Morrison	12,486
Fulton	Saddle	12,486
Fulton	Salem	12,486
Fulton	Sturkie	12,486
Fulton	Viola	12,486
Fulton	Wirth	4,161
Fulton County Total		\$ 137,341
Garland	Buckville	\$ 46,375
Garland	Fountain Lake	46,375
Garland	Highway 70 West	46,375
Garland	Hot Springs	46,375
Garland	Hot Springs Village	46,375
Garland	Jessieville	46,375
Garland	Lake Hamilton	46,375
Garland	Lonsdale	46,375
Garland	Morning Star	46,375
Garland	Mountain Pine	46,375
Garland	Piney	46,375
Garland County Total		\$ 510,123
Grant	Calvert Township	\$ 13,672
Grant	Cane Creek	18,106
Grant	Center Grove	15,335
Grant	Grapevine	13,487
Grant	Palestine	12,009
Grant	Poyen	12,194
Grant	Prattsville	17,182
Grant	Sheridan	58,383
Grant County Total		\$ 160,368
Greene	Lafe	\$ 13,949
Greene	Marmaduke	6,529
Greene	Northeast Greene County	19,196
Greene	Oak Grove Heights	14,678
Greene	Paragould	132,484
Greene	Philadelphia (Craighead Co)	2,515
Greene	South-Greene County	9,125
Greene	Western Greene County	20,066
Greene County Total		\$ 218,541

Schedule 2 (continued)

County	Fire Department	Calendar Year 2021 Distributed Act 833 Funding
Hempstead	Bingen	\$ 18,177
Hempstead	Blevins	18,177
Hempstead	Columbus	18,177
Hempstead	Cross Roads	18,177
Hempstead	DeAnn	18,177
Hempstead	Fulton	18,177
Hempstead	Guernsey	18,177
Hempstead	Hope	18,177
Hempstead	McCaskill	18,177
Hempstead	Ozan	18,177
Hempstead	Patmos	18,177
Hempstead	Perrytown	18,177
Hempstead	Saratoga	18,177
Hempstead	Southeast	18,177
Hempstead	Springhill	18,177
Hempstead	Washington	18,177
Hempstead	Yancy	18,177
Hempstead County Total		\$ 309,017
Hot Spring	Bismark	\$ 18,078
Hot Spring	Bonnerdale	18,078
Hot Spring	Glen Rose	22,804
Hot Spring	Lono-Rola	18,078
Hot Spring	Magnet Cove	18,078
Hot Spring	Malvern	35,128
Hot Spring	New DeRoche	18,078
Hot Spring	Ouachita	18,078
Hot Spring	Point Cedar	18,078
Hot Spring	Rockport	18,078
Hot Spring	South Malvern	18,078
Hot Spring	Southwest	18,078
Hot Spring County Total		\$ 238,711
Howard	Athens	\$ 12,233
Howard	Center Point	12,233
Howard	County Line	12,233
Howard	Mineral Springs	13,221
Howard	Nashville	43,627
Howard	Saratoga	12,233
Howard	Tollette	4,613
Howard	Umpire	12,233
Howard County Total		\$ 122,626

Schedule 2 (continued)

County	Fire Department	Calendar Year 2021 Distributed Act 833 Funding
Independence	Batesville	\$ 91,767
Independence	Cave City	4,684
Independence	Charlotte	7,573
Independence	Cushman	11,448
Independence	Desha	25,456
Independence	Floral	8,755
Independence	Newark	17,970
Independence	Northside	31,191
Independence	Oil Trough	9,193
Independence	Pleasant Plains	12,192
Independence	Ruddell Hill	10,506
Independence	Saffell (Lawrence Co)	372
Independence	Southside	42,617
Independence	Sulphur Rock	15,169
Independence County Total		\$ 288,894
Izard	Allison/Sylamore	\$ 13,526
Izard	Calico Rock	13,526
Izard	Franklin	13,526
Izard	Guion	13,526
Izard	Horseshoe Bend	13,526
Izard	Melbourne	13,526
Izard	Mount Pleasant	13,526
Izard	Oxford	13,526
Izard	Pineville	13,526
Izard	Ruthie Mountain	13,526
Izard	Zion	13,526
Izard County Total		\$ 148,786
Jackson	8-Mile	\$ 5,400
Jackson	Bradford (White Co.)	11,878
Jackson	Diaz	12,165
Jackson	Erwin	9,828
Jackson	Grubbs	7,983
Jackson	Newport	61,967
Jackson	Pleasant Plains (Independence Co.)	2,039
Jackson	Richwoods	7,532
Jackson	Swifton	10,730
Jackson	Tuckerman	24,176
Jackson	V-Ridge (White Co)	1,629
Jackson County Total		\$ 155,326

Schedule 2 (continued)

County	Fire Department	Calendar Year 2021 Distributed Act 833 Funding
Jefferson	Altheimer	\$ 12,153
Jefferson	Hardin	25,602
Jefferson	Highway 15 South	14,050
Jefferson	Humphrey	6,574
Jefferson	Island Harbor	5,332
Jefferson	Linwood/Moscow	4,298
Jefferson	Pine Bluff	204,140
Jefferson	Redfield	15,272
Jefferson	Sherrill	5,746
Jefferson	Southeast	11,938
Jefferson	Swan Lake	4,298
Jefferson	Tucker	6,884
Jefferson	Wabbaseka	7,795
Jefferson	Watson Chapel	27,763
Jefferson	White Hall	20,342
Jefferson	Wright/Pastoria	7,135
Jefferson County Total		\$ 379,322
Johnson	Clarksville	\$ 48,165
Johnson	Coal Hill	11,862
Johnson	Knoxville	8,711
Johnson	Lamar	13,666
Johnson	RFD # 5	6,527
Johnson	RFD # 1	19,745
Johnson	RFD # 10	3,773
Johnson	RFD # 2	16,714
Johnson	RFD # 3	7,928
Johnson	RFD # 6	5,688
Johnson	RFD # 7	5,316
Johnson	RFD # 8	7,113
Johnson County Total		\$ 155,209
Lafayette	Bradley	\$ 23,217
Lafayette	Lake Erling	23,217
Lafayette	Lewisville	23,217
Lafayette	River Bend	23,217
Lafayette	Stamps	23,217
Lafayette County Total		\$ 116,086
Lawrence	Black Rock	\$ 13,614
Lawrence	Hoxie	29,231
Lawrence	Imboden	8,982
Lawrence	Lynn	8,870
Lawrence	Portia	6,438
Lawrence	Ravenden	6,824
Lawrence	Saffell	3,418
Lawrence	Sedgwick	5,796
Lawrence	Strawberry	5,102
Lawrence	Walnut Ridge	54,377
Lawrence County Total		\$ 142,651

Schedule 2 (continued)

County	Fire Department	Calendar Year 2021 Distributed Act 833 Funding
Lee	Haynes	\$ 3,270
Lee	Lee County Fire Department	34,016
Lee	Marianna	72,604
Lee County Total		\$ 109,891
Lincoln	Cornerville	\$ 18,312
Lincoln	Garnett	18,312
Lincoln	Glendale	18,312
Lincoln	Gould	18,312
Lincoln	Grady	18,312
Lincoln	Southeast Jefferson County	18,312
Lincoln	Star City	18,312
Lincoln County Total		\$ 128,185
Little River	Alleene	\$ 10,491
Little River	Arden	10,491
Little River	Ashdown	10,491
Little River	Cerro-Gordo	10,491
Little River	East Ogden	10,491
Little River	Foreman	10,491
Little River	Oak Hill	10,491
Little River	Ogden	10,491
Little River	Wallace	10,491
Little River	Wilton	10,491
Little River	Winthrop	10,491
Little River	Yarborough	10,491
Little River County Total		\$ 125,896
Logan	Blue Mountain	\$ 9,631
Logan	Blue Mountain Rural	9,631
Logan	Booneville Rural	14,439
Logan	Driggs	9,631
Logan	Grayson	14,439
Logan	Ione	9,631
Logan	Magazine Rural	9,631
Logan	New Blaine/Shoal Creek Sub-Station	14,439
Logan	Paris	9,631
Logan	Ratcliff	9,631
Logan	Ratcliff Rural	9,631
Logan	Roseville	14,439
Logan	Scranton	14,439
Logan	Subiaco/Crossroads	14,439
Logan	Sugar Grove	9,631
Logan County Total		\$ 173,311

Schedule 2 (continued)

County	Fire Department	Calendar Year 2021 Distributed Act 833 Funding
Lonoke	Austin	\$ 18,380
Lonoke	Butlerville	18,380
Lonoke	CS&Z	18,380
Lonoke	Cabot	18,380
Lonoke	Coy	18,380
Lonoke	England	18,380
Lonoke	Humnoke	18,380
Lonoke	Keo	18,380
Lonoke	Lonoke	18,380
Lonoke	Mountain Springs	18,380
Lonoke	Scott	18,380
Lonoke	South Bend	18,380
Lonoke	Ward	18,380
Lonoke County Total		\$ 238,941
Madison	Clifty	\$ 14,121
Madison	Hindsville	14,121
Madison	Huntsville	14,121
Madison	Japton	14,121
Madison	Kingston	14,121
Madison	Marble	14,121
Madison	Pettigrew	14,121
Madison	Smyrna	14,121
Madison	St. Paul	14,121
Madison	Wesley	14,121
Madison	Witter-Aurora	14,121
Madison County Total		\$ 155,326
Marion	Bruno Rural	\$ 10,219
Marion	Bull Shoals	10,219
Marion	Fairview Rural	10,219
Marion	Lakeway Rural	10,219
Marion	Lazy Acres Rural	10,219
Marion	Oakland Promise Land Rural	10,219
Marion	Peel Rural	10,219
Marion	Pine Mountain Rural	10,219
Marion	Ralph Rural	10,219
Marion	Rea Valley Rural	10,219
Marion	Summit	10,219
Marion	Summit Rural	10,219
Marion	Yellville	10,219
Marion	Yellville Rural	10,219
Marion County Total		\$ 143,063

Schedule 2 (continued)

County	Fire Department	Calendar Year 2021 Distributed Act 833 Funding
Miller	Boggy Creek	\$ 11,866
Miller	Booker Bridge	11,866
Miller	Bright Star	11,866
Miller	Doddridge	11,866
Miller	Garland	33,722
Miller	Geona	11,866
Miller	Mandeville	11,866
Miller	Satellite	11,866
Miller	Texarkana	106,792
Miller	Trinity	11,866
Miller County Total		\$ 235,441
Mississippi	Armored-Huffman	\$ 8,046
Mississippi	Blytheville	114,988
Mississippi	Burdette	8,046
Mississippi	Dell	8,046
Mississippi	Dyess	8,046
Mississippi	Etowah	13,985
Mississippi	Gosnell	20,079
Mississippi	Joiner	10,376
Mississippi	Leachville	11,307
Mississippi	Luxora	11,307
Mississippi	Manila	18,245
Mississippi	Osceola	45,614
Mississippi	Wilson	11,310
Mississippi County Total		\$ 289,396
Monroe	Brinkley	\$ 42,946
Monroe	Clarendon	19,056
Monroe	East Monroe County	7,695
Monroe	Holly Grove	9,523
Monroe County Total		\$ 79,220
Montgomery	Caddo Gap	\$ 11,990
Montgomery	Joplin	11,990
Montgomery	Mount Ida	11,990
Montgomery	Norman	11,990
Montgomery	Oden	11,990
Montgomery	Pine Ridge	11,990
Montgomery	South Fork Center	11,990
Montgomery	Sulphur-Laverna	11,990
Montgomery County Total		\$ 95,920

Schedule 2 (continued)

County	Fire Department	Calendar Year 2021 Distributed Act 833 Funding
Nevada	Bluff City	\$ 8,621
Nevada	Bodcaw	8,621
Nevada	Cale	8,621
Nevada	Emmet	8,621
Nevada	Fairhills	16,806
Nevada	Laneburg	8,621
Nevada	Prescott	8,621
Nevada	Rescue Unit	8,621
Nevada	Rosston	8,621
Nevada	Willisville	8,621
Nevada County Total		\$ 94,395
Newton	Compton	\$ 10,626
Newton	Deer	10,626
Newton	Hasty	10,626
Newton	Jasper	10,626
Newton	Krooked Kreek	3,286
Newton	Lurton/Pelsor	10,626
Newton	Mt. Judea	10,626
Newton	Parthenon	10,626
Newton	Ponca - Firetower	10,626
Newton	Western Grove	10,626
Newton County Total		\$ 98,920
Ouachita	Bearden	\$ 16,000
Ouachita	Camden	16,000
Ouachita	Chidester	16,000
Ouachita	East Camden	16,000
Ouachita	Elliott	16,000
Ouachita	Frenchport	16,000
Ouachita	Louann	16,000
Ouachita	Ouachita Fire District #1	16,000
Ouachita	Stephens	31,191
Ouachita	Two Bayou	16,000
Ouachita	Upper White Oak	16,000
Ouachita County Total		\$ 191,188
Perry	Adona	\$ 7,798
Perry	Bigelow	7,798
Perry	Casa	7,798
Perry	Cherry Hill	7,798
Perry	Harris Brake	7,798
Perry	Hollis	7,798
Perry	Houston	7,798
Perry	Nimrod	7,798
Perry	Perry	7,798
Perry	Perryville	7,798
Perry	Stony Point	7,798
Perry	West Pulaski County	7,798
Perry	Williams Junction	7,798
Perry County Total		\$ 101,370

Schedule 2 (continued)

County	Fire Department	Calendar Year 2021 Distributed Act 833 Funding
Phillips	Barton	\$ 11,049
Phillips	Elaine	11,049
Phillips	Helena / West Helena	114,890
Phillips	Lake View	11,049
Phillips	Marvell	12,984
Phillips	Marvell Rural	11,049
Phillips	South Phillips County	11,049
Phillips County Total		\$ 183,121
Pike	Daisy	\$ 2,003
Pike	Delight Rural	15,153
Pike	Glenwood	28,094
Pike	Kirby	15,153
Pike	Langley	15,153
Pike	Lodi	15,153
Pike	Murfreesboro	21,228
Pike	Nathan	15,153
Pike	New Hope	15,153
Pike County Total		\$ 142,246
Poinsett	Central	\$ 13,793
Poinsett	Fisher	15,620
Poinsett	Harrisburg	23,299
Poinsett	Lepanto	23,299
Poinsett	Marked Tree	23,411
Poinsett	Trumann	47,958
Poinsett	Tyronza	20,279
Poinsett	Weiner	18,732
Poinsett County Total		\$ 186,391
Polk	Acorn Rural	\$ 6,785
Polk	Big Fork Rural	6,785
Polk	Boardcamp Rural	6,785
Polk	Cherry Hill Rural	6,785
Polk	Cove	3,053
Polk	Cove Rural	6,785
Polk	Dallas Valley Rural	6,785
Polk	Grannis	4,428
Polk	Grannis Rural	6,785
Polk	Hatfield	3,301
Polk	Hatfield Rural	6,785
Polk	Ink Rural	6,785
Polk	Mena	45,858
Polk	Potter Rural	6,785
Polk	Rocky Rural	6,785
Polk	Shady Grove Rural	6,785
Polk	Shady Rural	6,785
Polk	Vandervoort	695
Polk	Vandervoort Rural	6,785
Polk	Wickes	6,026
Polk	Wickes Rural	6,785
Polk County Total		\$ 165,136

Schedule 2 (continued)

County	Fire Department	Calendar Year 2021 Distributed Act 833 Funding
Pope	Appleton	\$ 14,112
Pope	Atkins	21,183
Pope	Bayliss	14,112
Pope	Crow Mountain	14,112
Pope	Dover	21,183
Pope	Dover Rural	14,112
Pope	Hatley	14,112
Pope	Hector	21,183
Pope	Linker	14,112
Pope	London	21,183
Pope	Martin Township	14,112
Pope	Moreland	14,112
Pope	Pea Ridge	14,112
Pope	Pottsville	21,183
Pope	Russellville	49,469
Pope	Witts Springs	467
Pope County Total		\$ 282,856
Prairie	Bisco (Fredonia)	\$ 8,441
Prairie	Brown Grove	12,377
Prairie	Center Point	10,229
Prairie	Cross Roads	10,229
Prairie	De Valls Bluff	11,535
Prairie	Des Arc	26,463
Prairie	Hazen	21,957
Prairie	Northside	10,229
Prairie	Oak Prairie	10,229
Prairie	Peppers Lake	10,229
Prairie	Sand Hill	10,229
Prairie County Total		\$ 142,148
Pulaski	Alexander	\$ 563
Pulaski	Arch Street VFD	7,508
Pulaski	Crystal VFD	7,508
Pulaski	East Pulaski VFD	7,508
Pulaski	Gravel Ridge VFD	7,508
Pulaski	Hensley VFD	15,016
Pulaski	Highway 365 South VFD	7,508
Pulaski	Jacksonville	81,510
Pulaski	Lake Maumelle VFD #8	7,508
Pulaski	Little Rock	494,771
Pulaski	Maumelle	18,805
Pulaski	McAlmont VFD	7,508
Pulaski	North Little Rock	173,178
Pulaski	North Pulaski VFD #15	7,508
Pulaski	Northeast Saline County VFD	7,508
Pulaski	Oak Grove VFD	7,508
Pulaski	Quail Creek VFD	7,508
Pulaski	Runyan Acres #10	7,508
Pulaski	Scott VFD	7,508
Pulaski	Sherwood	52,876
Pulaski	South Bend Fire & Rescue	7,508
Pulaski	Sweet Home VFD	15,016
Pulaski	West Pulaski VFD	7,508
Pulaski	Williams Junction	7,508
Pulaski	Wrightsville VFD	7,508
Pulaski County Total		\$ 979,370

Schedule 2 (continued)

County	Fire Department	Calendar Year 2021 Distributed Act 833 Funding
Randolph	Biggers-Reyno	\$ 18,129
Randolph	Dalton	10,508
Randolph	O'Kean	12,878
Randolph	Pocahontas	58,308
Randolph	Pocahontas Vol. Fire Fighter Corp.	10,508
Randolph	Ravenden Springs	11,750
Randolph	Warm Springs	10,508
Randolph	Water Valley	10,508
Randolph County Total		\$ 143,097
Saint Francis	Caldwell	\$ 23,385
Saint Francis	Colt	23,385
Saint Francis	Forrest City	50,000
Saint Francis	Hughes	23,385
Saint Francis	Madison	23,385
Saint Francis	Newcastle	23,385
Saint Francis	Palestine	23,385
Saint Francis	Wheatley	23,385
Saint Francis	Widener	23,385
Saint Francis County Total		\$ 237,076
Saline	Alexander	\$ 19,895
Saline	Bauxite	26,526
Saline	Benton	26,526
Saline	Bryant	26,526
Saline	Collegeville	26,526
Saline	Crow's Station	26,526
Saline	Crystal	9,947
Saline	East End	26,526
Saline	Haskell	26,526
Saline	Hot Springs Village	13,145
Saline	Lake Norrell	26,526
Saline	Lonsdale	13,145
Saline	Northeast	26,526
Saline	Paron	26,526
Saline	Salem	26,526
Saline	Sardis	26,526
Saline	Shannon Hills	26,526
Saline	Shaw	26,526
Saline	Traskwood	26,526
Saline	Turtle Creek	26,526
Saline	West Pulaski	9,947
Saline County Total		\$ 490,502

Schedule 2 (continued)

County	Fire Department	Calendar Year 2021 Distributed Act 833 Funding
Scott	Blackfork	\$ 5,900
Scott	Blue Ball	5,900
Scott	Boles	5,900
Scott	Haletown	5,900
Scott	Harvey/Nola	5,900
Scott	Highway 250	5,900
Scott	Hon	5,900
Scott	Mansfield	3,248
Scott	Nella	5,900
Scott	Northwest Scott	5,900
Scott	State Line	5,900
Scott	Waldron	16,511
Scott	Waldron Rural	5,900
Scott	Winfield	5,900
Scott	Y City	5,900
Scott County Total		\$ 96,465
Searcy	Marshall	\$ 8,525
Searcy	Morning Star	8,525
Searcy	PG&S	25,576
Searcy	Shady Grove	8,525
Searcy	Witts Springs	8,525
Searcy County Total		\$ 59,677
Sebastian	Barling	\$ 16,142
Sebastian	Big Creek	12,038
Sebastian	Bonanza	12,038
Sebastian	Central City	12,038
Sebastian	EMP Rural Fire Association	12,038
Sebastian	Fort Smith	129,194
Sebastian	Greenwood	22,106
Sebastian	Greenwood Rural VFD	12,038
Sebastian	Hackett	12,038
Sebastian	Hartford	12,038
Sebastian	Huntington	12,038
Sebastian	Lavaca	12,870
Sebastian	Mansfield	12,038
Sebastian	Midland	12,038
Sebastian	Milltown	12,038
Sebastian	Sugarloaf	12,038
Sebastian	White Bluff	12,038
Sebastian County Total		\$ 336,812
Sevier	Ben Lomond	\$ 14,897
Sevier	Central	14,897
Sevier	Cossatot	14,897
Sevier	De Queen	14,897
Sevier	Gillham	14,897
Sevier	Greens Chapel	14,897
Sevier	Horatio	14,897
Sevier	Lockesburg	14,897
Sevier	Provo	14,897
Sevier County Total		\$ 134,071

Schedule 2 (continued)

County	Fire Department	Calendar Year 2021 Distributed Act 833 Funding
Sharp	Ash Flat	\$ 18,938
Sharp	Cave City	36,854
Sharp	Center	6,534
Sharp	Cherokee Village	54,759
Sharp	Evening Shade	17,473
Sharp	Grange-Calamine	10,408
Sharp	Hardy	13,574
Sharp	Highland	14,245
Sharp	Nine Mile Ridge	2,003
Sharp	Ozark Acres	9,489
Sharp	Sidney	9,564
Sharp	Williford	7,577
Sharp	Wirth	9,750
Sharp	Zion	1,382
Sharp County Total		\$ 212,551
Stone	Allison Sylamore	\$ 13,067
Stone	Ben	13,067
Stone	Dodd Mountain	13,067
Stone	Fifty-Six	4,138
Stone	Iron Mountain	13,067
Stone	Mountain View	30,287
Stone	Sixth District	13,067
Stone	Sunnyland	13,067
Stone	Timbo	13,067
Stone County Total		\$ 125,896
Union	Cairo	\$ 21,909
Union	Calion	21,909
Union	El Dorado	21,909
Union	Faircrest	21,909
Union	Hibanks	21,909
Union	Junction City	42,711
Union	Lawson-Urbana	21,909
Union	Mt. Holly	21,909
Union	Norphlet	21,909
Union	Old Union	21,909
Union	Parkers Chapel	21,909
Union	Smackover	21,909
Union	Three Creeks	21,909
Union County Total		\$ 305,620

Schedule 2 (continued)

County	Fire Department	Calendar Year 2021 Distributed Act 833 Funding
Van Buren	Alread	\$ 8,742
Van Buren	Botkinburg	8,742
Van Buren	Burnt Ridge	8,742
Van Buren	Chimes	8,742
Van Buren	Choctaw	8,742
Van Buren	Clinton	29,017
Van Buren	Culpepper	8,742
Van Buren	Damascus	8,742
Van Buren	Dennard	8,742
Van Buren	Fairfield Bay City	24,039
Van Buren	Gravesville	8,742
Van Buren	Highway 110	8,742
Van Buren	Morganton	8,742
Van Buren	Scotland	8,742
Van Buren	Shirley	8,742
Van Buren	Walnut Grove	8,742
Van Buren County Total		\$ 175,447
Washington	Boston Mountain	\$ 16,293
Washington	Elkins	23,364
Washington	Evansville	15,105
Washington	Farmington	25,514
Washington	Fayetteville	104,996
Washington	Goshen	22,855
Washington	Johnson	22,006
Washington	Lincoln	37,507
Washington	Morrow	15,105
Washington	Nob Hill	19,913
Washington	Prairie Grove	29,813
Washington	Round Mountain	19,913
Washington	Springdale	72,411
Washington	Strickler	12,163
Washington	Sunset	12,163
Washington	Tontitown	17,707
Washington	Tontitown Rural	7,977
Washington	Wedington	18,895
Washington	West Fork	18,499
Washington	West Fork Rural	14,709
Washington	Wheeler	18,895
Washington	White House	19,913
Washington County Total		\$ 565,713

Schedule 2 (continued)

County	Fire Department	Calendar Year 2021 Distributed Act 833 Funding
White	Albion	\$ 17,000
White	Antioch	15,919
White	Bald Knob	24,840
White	Beebe	45,334
White	Bradford	13,236
White	Center Hill	18,927
White	El Paso	13,670
White	Fairview	14,302
White	Floyd/Romance	17,511
White	Garner	9,461
White	Georgetown	8,329
White	Gum Springs	18,160
White	Higginson	12,795
White	Judsonia	21,761
White	Kensett	15,867
White	Letona	9,799
White	McRae	13,805
White	Mt. Vernon	1,460
White	North White County	21,629
White	Pangburn	13,129
White	Pleasant Plains (Independence Co.)	2,346
White	Searcy	98,142
White	Velvet Ridge	15,783
White County Total		\$ 443,205
Woodruff	Augusta	\$ 27,777
Woodruff	Cotton Plant	22,166
Woodruff	Hunter	5,612
Woodruff	McCrary	22,802
Woodruff	Patterson	9,285
Woodruff County Total		\$ 87,641
Yell	Aly-Chula	\$ 6,849
Yell	Belleville	10,273
Yell	Briggsville	6,849
Yell	Chickalah	10,273
Yell	Danville	20,546
Yell	Dardanelle	30,818
Yell	Dardanelle Rural	13,697
Yell	Dutch Creek	6,849
Yell	Galla Rock	13,697
Yell	Havana	10,273
Yell	Mount Nebo	6,849
Yell	Ola	17,121
Yell	Plainview	13,697
Yell	Rover	6,849
Yell	West Fourche	6,849
Yell County Total		\$ 181,486
State of Arkansas Total		\$ 15,988,920

Source: Arkansas Administrative Statewide Information System (unaudited by Arkansas Legislative Audit)

Schedule 3

Rural Fire Protection Loans, Forestry Firewise USA® Grants, and
 Division of Rural Services Grants
 Funding by County
 Calendar Years 2020 and 2021 vs. Calendar Year 2000 and 2001
 (Totals may not sum due to rounding.)

County	Forestry					2003				
	2020 Population	Rural Fire Protection Loans	Division Firewise USA® Grants*	Rural Community Grants	Rural Services Block Grants	Special Report Population	Rural Fire Protection Loans	State Rural Fire Protection Grants	Total	Total
Arkansas	17,149		\$ 26,000			20,749	\$ 10,341		\$ 10,341	10,341
Ashley	19,062			\$ 67,036		24,209		\$ 33,835		33,835
Baxter	41,627		43,000	30,000		38,386	5,020	15,000		20,020
Benton	284,333			27,728		153,406	15,000			15,000
Boone	37,373					33,948	17,469	15,000		32,469
Bradley	10,545					12,600		8,000		8,000
Calhoun	4,739				\$ 85,475	5,744	10,324	6,482		16,806
Carroll	28,260		1,000			25,357	9,500	14,900		24,400
Chicot	10,208		2,000			14,117	15,282	15,000		30,282
Clark	21,446			9,199		23,546	13,983			13,983
Clay	14,552					17,609	35,144	22,500		57,644
Cleburne	24,711					24,046	55,376	1,000		56,376
Cleveland	7,550			32,142		8,571		12,000		12,000
Columbia	22,801			9,069		25,603		13,000		13,000
Conway	20,715			14,885		20,336	35,146	2,717		37,863
Craighead	111,231			44,995		82,148		23,845		23,845
Crawford	60,133					53,247	22,895	30,000		52,895
Crittenden	48,163			3,357		50,866		14,900		14,900
Cross	16,833					19,526		7,500		7,500
Dallas	6,482				70,000	9,210	5,216	6,700		11,916
Desha	11,395					15,341				
Drew	17,350			14,550		18,723		14,584		14,584
Faulkner	123,498		3,000			86,014	17,127	6,000		23,127
Franklin	17,097		2,000	4,878		17,771	40,919			40,919
Fulton	12,075					11,642	2,815	15,951		18,766
Garland	100,180		6,000			88,068	51,460	13,711		65,171
Grant	17,958			4,849		16,464	7,478	13,778		21,256
Greene	45,736			7,838		37,331	21,311	12,500		33,811
Hempstead	20,065			1,767		23,587	33,227	22,961		56,188
Hot Spring	33,040					30,353	12,901	14,298		27,199
Howard	12,785		2,000			14,300	9,719	6,000		15,719
Independence	37,938		2,000	20,448		34,233	2,469			2,469
Izard	13,577		2,000			13,249		7,587		7,587
Jackson	16,755			43,283		18,418	40,962			40,962
Jefferson	67,260			29,851		84,278	14,279	15,000		29,279

Schedule 3 (continued)

Funding for Calendar Years 2000 and 2001						
County	2003 Special Population		Rural Fire Protection Loans	State Rural Fire Protection Grants	Total	
	Population					
Johnson	22,781			\$ 29,297	\$ 29,297	\$ 29,297
Lafayette	8,559		\$ 2,608	15,000		17,608
Lawrence	17,774		10,000			10,000
Lee	12,580			4,275		4,275
Lincoln	14,492		16,088	4,355		20,443
Little River	13,628		25,949	12,475		38,424
Logan	22,486		33,570	14,435		48,005
Lonoke	52,828			10,500		10,500
Madison	14,243		26,947	29,900		56,847
Marion	16,140			2,558		2,558
Miller	40,443		44,135	6,965		51,100
Mississippi	51,979		3,450			3,450
Monroe	10,254		17,469			17,469
Montgomery	9,245		41,061			41,061
Nevada	9,955		5,000			5,000
Newton	8,608		38,546			38,546
Ouachita	28,790		10,469	26,659		37,128
Perry	10,209		14,902			14,902
Phillips	26,445		15,000			15,000
Pike	11,303		5,781	1,750		7,531
Poinsett	25,614					
Polk	20,229		7,211	31,235		38,446
Pope	54,469		2,000	22,400		24,400
Prairie	9,539		10,247			10,247
Pulaski	361,474		59,032			59,032
Randolph	18,195		20,102	2,480		20,102
Saline	83,529		20,137			22,617
Scott	10,996		9,700	15,312		25,012
Searcy	8,261		2,269	10,000		12,269
Sebastian	115,071		15,000	15,000		30,000
Sevier	15,757					
Sharp	17,119					
St. Francis	29,329		15,060	15,000		15,000
Stone	11,499		30,000	11,888		26,948
Union	45,629					30,000
Van Buren	16,192		10,309	18,697		29,006
Washington	157,715		17,575			17,575
White	67,165		51,151	11,676		62,827
Woodruff	8,741		13,000			13,000
Yell	21,139		8,386			8,386
Totals	2,673,400		\$ 1,107,516	\$ 728,730		\$ 1,836,246

Funding for Calendar Years 2020 and 2021							
County	2020 Population		Rural Fire Protection Loans	Forestry Division Firewise USA® Grants*	Rural Community Grants	Rural Services Block Grants	Total
	Population						
Johnson	25,749		\$ 21,452		\$ 9,206		\$ 30,659
Lafayette	6,308				12,075		12,075
Lawrence	16,216			\$ 7,500		\$ 36,057	43,557
Lee	8,600				7,324		7,324
Lincoln	12,941					40,524	40,524
Little River	12,026		8,250	6,000	15,000	74,955	89,205
Logan	21,131		8,925				23,925
Lonoke	74,015				14,962		14,962
Madison	16,521		14,438			33,400	47,837
Marion	16,826		15,000		8,490		23,490
Miller	42,600			2,000			2,000
Mississippi	40,685						
Monroe	6,799				18,975		18,975
Montgomery	8,484			11,000			11,000
Nevada	8,310				2,769		41,269
Newton	7,225			16,000		38,500	91,000
Ouachita	22,650				5,323	75,000	51,557
Perry	10,019		4,000			46,234	4,000
Phillips	16,568					86,360	86,360
Pike	10,171				15,000		15,000
Poinsett	22,965						
Polk	19,221			2,000			2,000
Pope	63,381			4,000			4,000
Prairie	8,282				65,546	39,083	104,628
Pulaski	399,125		23,639				23,639
Randolph	18,571		15,000		4,600		19,600
Saline	123,416						
Scott	9,836						
Searcy	7,828						
Sebastian	127,799			2,000	24,401	42,345	68,746
Sevier	15,839			4,500		74,983	79,483
Sharp	17,271			8,000	15,000	75,000	98,000
St. Francis	23,090						
Stone	12,359			4,500	15,000		19,500
Union	39,054			2,000			2,000
Van Buren	15,796		24,000			35,546	59,546
Washington	245,871			7,000	9,088	74,500	90,588
White	76,822				65,762		65,762
Woodruff	6,269				3,254	66,239	69,493
Yell	20,263			2,000	13,675		15,675
Totals	3,011,524		\$ 320,259	\$ 171,500	\$ 618,189	\$ 1,211,262	\$ 2,321,211

*The Firewise USA® Program was established in 2002.

Source: Arkansas Legislative Audit 2003 Special Report, United States Census Bureau, and Arkansas Administrative Statewide Information System (unaudited by Arkansas Legislative Audit)

Appendix A

Certified Fire Departments in Arkansas 2019 Certifications for Act 833 Funding in 2020

County	Department Name *	Total Active Firefighting Personnel	Department Type **	Compensation Type
Arkansas	Alcorn RFD	9	Rural	Volunteer
Arkansas	Almyra MFD	16	Municipal	Volunteer
Arkansas	Casscoe RFD	10	Rural	Volunteer
Arkansas	Crocketts Bluff RFD	10	Rural	Volunteer
Arkansas	DeWitt MFD	17	Municipal	Volunteer/Paid on Call
Arkansas	Gillett MFD	14	Municipal	Volunteer
Arkansas	Humphrey MFD	18	Municipal	Volunteer
Arkansas	One Horse RFD	12	Rural	Volunteer
Arkansas	St. Charles MFD	6	Municipal	Volunteer
Arkansas	Stuttgart MFD	26	Municipal	Combination
Arkansas	Tichnor RFD	9	Rural	Volunteer
Ashley	Berlin RFD	6	Unknown	Unknown
Ashley	Crossett FD	22	Municipal	Paid
Ashley	Fountain Hill MFD	8	Municipal	Volunteer
Ashley	Hamburg MFD	21	Municipal	Volunteer
Ashley	Milo RFD	17	Rural	Volunteer
Ashley	Montrose MFD	13	Municipal	Volunteer
Ashley	North Crossett RFD	21	Rural	Volunteer
Ashley	Portland MFD	10	Municipal	Volunteer
Ashley	Unity - Frost Prairie RFD	22	Rural	Volunteer
Ashley	West Crossett RFD	18	Rural	Volunteer
Ashley	Wilmot MFD	10	Municipal	Volunteer
Baxter	Big Flat MFD	10	Municipal	Volunteer
Baxter	Buford Community FPD	20	Rural	Volunteer
Baxter	Clarkridge Community FPD	19	Rural	Volunteer
Baxter	Cotter - Gassville FPD	15	Rural	Volunteer
Baxter	Gamaliel FPD	18	Rural	Volunteer
Baxter	Gassville MFD	16	Municipal	Volunteer
Baxter	Grover Township FPD	17	Rural	Volunteer
Baxter	Hand Cove FPD	13	Rural	Volunteer
Baxter	Henderson FPD	10	Rural	Volunteer
Baxter	Lone Rock FPD	13	Rural	Volunteer
Baxter	Midway FPD	18	Rural	Volunteer
Baxter	Mountain Home MFD	37	Municipal	Combination
Baxter	Norfolk FPD	20	Rural	Volunteer
Baxter	Northeast Lakeside FPD	17	Rural	Volunteer
Baxter	Oakland Promise Land	23	Rural	Volunteer
Baxter	Rodney - Jordan FPD	12	Rural	Volunteer
Baxter	Salesville MFD	9	Municipal	Volunteer
Baxter	Tracy Area FPD	18	Rural	Volunteer

Appendix A (Continued)

County	Department Name *	Total Active Firefighting Personnel	Department Type **	Compensation Type
Benton	Avoca RFD	22	Rural	Volunteer
Benton	Beaver Lake RFD	35	Rural	Volunteer
Benton	Bella Vista MFD	61	Municipal	Paid
Benton	Bentonville MFD	84	Municipal	Combination
Benton	Bethel Heights MFD	13	Municipal	Combination
Benton	Cave Springs MFD	23	Municipal	Combination
Benton	Centerton	27	Municipal	Volunteer/Paid on Call
Benton	Decatur MFD	12	Municipal	Volunteer
Benton	Gallatin RFD	12	Rural	Volunteer
Benton	Gentry MFD	21	Municipal	Combination
Benton	Gravette MFD	32	Municipal	Combination
Benton	Hickory Creek RFD	16	Rural	Volunteer
Benton	Highfill MFD	28	Municipal	Combination
Benton	Highway 94 East RFD	15	Rural	Volunteer
Benton	Little Flock MFD	14	Municipal	Combination
Benton	Lowell MFD	27	Municipal	Combination
Benton	Maysville RFD	10	Rural	Volunteer
Benton	Nebco RFD	43	Rural	Volunteer
Benton	Pea Ridge MFD	45	Municipal	Volunteer
Benton	Piney Point RFD	13	Rural	Volunteer
Benton	Pleasure Heights RFD	16	Rural	Volunteer
Benton	Rocky Branch RFD	17	Rural	Volunteer
Benton	Rogers MFD	130	Municipal	Paid
Benton	Siloam Springs MFD	58	Municipal	Combination
Benton	Springdale	127	Municipal	Paid on Call
Benton	Sulphur Springs MFD	11	Municipal	Volunteer
Boone	Alpena RFD	18	Rural	Volunteer
Boone	Bergman RFD	19	Rural	Volunteer
Boone	Capps - Batavia RFD	24	Rural	Volunteer
Boone	Cottonwood RFD	21	Rural	Volunteer
Boone	Diamond City RFD	16	Rural	Volunteer
Boone	Harmon RFD	21	Rural	Volunteer
Boone	Harrison MFD	35	Municipal	Paid
Boone	Hilltop RFD	17	Rural	Volunteer
Boone	Krooked Kreek RFD	27	Rural	Volunteer
Boone	Lead Hill RFD	12	Rural	Volunteer
Boone	Omaha FPD	15	Rural	Volunteer
Boone	Valley Springs RFD	18	Rural	Volunteer
Boone	Zinc RFD	8	Rural	Volunteer
Bradley	Banks MFD	6	Municipal	Volunteer
Bradley	Bradley RFD	12	Rural	Volunteer
Bradley	County Line RFD	6	Rural	Volunteer
Bradley	Hermitage MFD	11	Municipal	Volunteer
Bradley	Jersey RFD	18	Rural	Volunteer
Bradley	Johnsonville RFD	18	Rural	Volunteer
Bradley	Pleasantville RFD	14	Rural	Volunteer
Bradley	Sumpter RFD	8	Rural	Volunteer
Bradley	Warren MFD	30	Municipal	Combination

Appendix A (Continued)

County	Department Name *	Total Active Firefighting Personnel	Department Type **	Compensation Type
Calhoun	Caney Creek RFD	8	Rural	Volunteer
Calhoun	Chambersville RFD	9	Rural	Volunteer
Calhoun	Hampton MFD	16	Municipal	Volunteer
Calhoun	Harrell MFD	17	Municipal	Volunteer
Calhoun	Locust Bayou RFD	14	Rural	Volunteer
Calhoun	Thornton MFD	11	Municipal	Volunteer
Calhoun	Tinsman RFD	11	Rural	Volunteer
Carroll	Alpena RFD	18	Rural	Volunteer
Carroll	Berryville MFD	18	Municipal	Volunteer
Carroll	Eureka Springs	32	Municipal	Combination
Carroll	Grassy Knob RFD	19	Rural	Volunteer
Carroll	Green Forest MFD	23	Municipal	Volunteer
Carroll	Holiday Island RFD	24	Rural	Volunteer
Carroll	Inspiration Point Rural FPD	12	Rural	Volunteer
Carroll	Oak Grove MFD	25	Municipal	Volunteer
Carroll	South Carroll County RFD	14	Rural	Volunteer
Chicot	Dermott MFD	20	Municipal	Volunteer
Chicot	Eudora MFD	16	Municipal	Volunteer
Chicot	Fawnwood RFD	6	Rural	Volunteer
Chicot	Lake Village MFD	19	Municipal	Volunteer
Chicot	Lakeport RFD	8	Rural	Volunteer
Chicot	Ross Van Ness - Wellford RFD	10	Rural	Volunteer
Clark	Alpine RFD	8	Rural	Volunteer
Clark	Amity MFD	10	Municipal	Volunteer
Clark	Arkadelphia MFD	24	Municipal	Combination
Clark	Beime RFD	6	Rural	Volunteer
Clark	Caddo Valley MFD	13	Municipal	Volunteer
Clark	DeGray RFD	16	Rural	Volunteer
Clark	East Clark County RFD	6	Rural	Volunteer
Clark	Hollywood RFD	8	Rural	Volunteer
Clark	Kansas Community RFD	8	Rural	Volunteer
Clark	Okolona MFD	9	Municipal	Volunteer
Clark	Whelen Springs MFD	8	Municipal	Volunteer
Clay	McDougal MFD	13	Municipal	Volunteer
Clay	Peach Orchard MFD	10	Municipal	Volunteer
Clay	Piggott MFD	21	Municipal	Volunteer
Clay	Pollard MFD	10	Municipal	Volunteer
Clay	Rector MFD	20	Municipal	Volunteer
Clay	Success MFD	14	Municipal	Volunteer
Cleburne	Concord RFD	14	Rural	Volunteer
Cleburne	Cove Creek RFD	28	Rural	Volunteer
Cleburne	Drasco RFD	8	Rural	Volunteer
Cleburne	Fairfield Bay MFD	32	Municipal	Volunteer
Cleburne	Greers Ferry MFD	25	Municipal	Volunteer
Cleburne	Heber Springs MFD	28	Municipal	Combination
Cleburne	Hopewell RFD	10	Rural	Volunteer
Cleburne	Pine Snag Lobo RFD	14	Rural	Volunteer
Cleburne	Prim RFD	15	Rural	Volunteer
Cleburne	Quitman MFD	19	Rural	Volunteer
Cleburne	Tumbling Shoals - Ida RFD	13	Rural	Volunteer
Cleburne	Wilburn RFD	23	Rural	Volunteer

Appendix A (Continued)

County	Department Name *	Total Active Firefighting Personnel	Department Type **	Compensation Type
Cleveland	County Line 2	6	Rural	Volunteer
Cleveland	Highway 35 South RFD	20	Rural	Volunteer
Cleveland	Hwy 212 RFD	6	Rural	Volunteer
Cleveland	Kingsland MFD	17	Municipal	Volunteer
Cleveland	New Edinburg RFD - Station #1	9	Rural	Volunteer
Cleveland	New Edinburg RFD - Station #2	8	Rural	Volunteer
Cleveland	Pansy RFD	12	Rural	Volunteer
Cleveland	Rison MFD	21	Municipal	Volunteer
Cleveland	Rye RFD	9	Rural	Volunteer
Cleveland	Woodlawn RFD	12	Rural	Volunteer
Cleveland	Woodlawn RFD	12	Rural	Volunteer
Cleveland	Y Community RFD	16	Rural	Volunteer
Columbia	79 South Community RFD	8	Rural	Volunteer
Columbia	Bussey/Sharman FPD	11	Rural	Volunteer
Columbia	Calhoun RFD	14	Rural	Volunteer
Columbia	Emerson MFD	9	Municipal	Volunteer
Columbia	Four Communities FPD	10	Rural	Volunteer
Columbia	Macedonia/Dorcheat FPD	12	Rural	Volunteer
Columbia	Magnolia MFD	19	Municipal	Combination
Columbia	McNeil MFD	8	Municipal	Volunteer
Columbia	McNeil RFD	14	Rural	Volunteer
Columbia	Mount Vernon VFD	16	Rural	Volunteer
Columbia	Rudd's Crossing RFD	6	Rural	Volunteer
Columbia	Taylor MFD	9	Municipal	Volunteer
Columbia	Waldo MFD	10	Municipal	Volunteer
Columbia	Walkerville RFD	10	Rural	Volunteer
Conway	Blackwell FPD	12	Rural	Volunteer
Conway	Center Ridge FPD	16	Rural	Volunteer
Conway	Cleveland FPD	17	Rural	Volunteer
Conway	Conway County RFD	11	Rural	Volunteer
Conway	Hill Creek RFD	20	Rural	Volunteer
Conway	Jerusalem FPD	9	Rural	Volunteer
Conway	Menifee RFD	13	Rural	Volunteer
Conway	Morrilton MFD	30	Municipal	Volunteer
Conway	Oppelo MFD	18	Municipal	Volunteer
Conway	Overcup RFD	14	Rural	Volunteer
Conway	Springfield RFD	13	Rural	Volunteer
Conway	St. Vincent FPD	13	Rural	Volunteer
Craighead	Bay MFD	23	Municipal	Volunteer
Craighead	Bono FD	29	Rural	Volunteer
Craighead	Brookland RFD	29	Rural	Volunteer
Craighead	Caraway VFD	16	Municipal	Volunteer
Craighead	Cash RFD	14	Rural	Volunteer
Craighead	Jonesboro FD	118	Municipal	Paid
Craighead	Lake City District #1	19	Municipal	Volunteer
Craighead	Monette MFD	21	Municipal	Volunteer
Craighead	Philadelphia FPD	14	Rural	Volunteer
Craighead	South Ridge RFD	20	Rural	Volunteer
Craighead	Valley View RFD	12	Rural	Volunteer

Appendix A (Continued)

County	Department Name *	Total Active Firefighting Personnel	Department Type **	Compensation Type
Crawford	Alma MFD	26	Municipal	Volunteer
Crawford	Butterfield RFD (District 5)	20	Rural	Volunteer
Crawford	Cedarville MFD	13	Rural	Volunteer
Crawford	Crawford Co. Dist. 4 Cedarville	14	Rural	Volunteer
Crawford	Crawford Co. Dist. 2 Mulberry RFD	24	Rural	Volunteer
Crawford	Crawford Co. Dist. 3 Mountainburg	22	Rural	Volunteer
Crawford	Crawford County District 1 RFD	56	Rural	Volunteer
Crawford	Crawford County District 6 RFD	17	Rural	Volunteer
Crawford	Crawford County RFD	17	Rural	Volunteer
Crawford	Dyer MFD	9	Municipal	Volunteer
Crawford	Fire District 8	32	Rural	Volunteer
Crawford	Natural Dam RFD	11	Rural	Volunteer
Crawford	Van Buren MFD	49	Municipal	Paid
Crittenden	Anthonyville MFD	15	Municipal	Volunteer
Crittenden	Crawfordsville VFD	17	Municipal	Volunteer
Crittenden	Earle MFD	9	Municipal	Volunteer
Crittenden	Gilmore	7	Rural	Volunteer
Crittenden	Heafer FPD	9	Rural	Volunteer
Crittenden	Horseshoe Lake MFD	23	Municipal	Volunteer
Crittenden	Jennette MFD	12	Municipal	Volunteer
Crittenden	Marion FD	41	Municipal	Volunteer
Crittenden	West Memphis MFD	61	Municipal	Paid
Cross	Bay Village RFD	14	Rural	Volunteer
Cross	Cherry Valley MFD	25	Municipal	Volunteer
Cross	Hickory Ridge MFD	16	Municipal	Volunteer
Cross	Parkin MFD	10	Municipal	Volunteer
Cross	Vanndale RFD	6	Rural	Volunteer
Cross	Wynne MFD	24	Municipal	Volunteer
Dallas	Cooterneck RFD	18	Rural	Volunteer
Dallas	Fordyce MFD	19	Municipal	Volunteer
Dallas	Holly Springs RFD	7	Rural	Volunteer
Dallas	Manning RFD	6	Rural	Volunteer
Dallas	Ouachita Rural VFD	13	Rural	Volunteer
Dallas	Sparkman MFD	11	Municipal	Volunteer
Dallas	Temperance Hill RFD	7	Rural	Volunteer
Dallas	Tulip - Princeton RFD	18	Rural	Volunteer
Desha	Arkansas City MFD	10	Municipal	Volunteer
Desha	Dumas MFD	20	Municipal	Paid
Desha	Halley RFD	17	Rural	Volunteer
Desha	McGehee MFD	35	Municipal	Combination
Desha	Tillar MFD	15	Municipal	Volunteer
Desha	Watson RFD	12	Rural	Volunteer
Drew	Clear Creek RFD	14	Rural	Volunteer
Drew	Collins - Cominto RFD	10	Rural	Volunteer
Drew	Lacey/Ladell RFD	19	Rural	Volunteer
Drew	Monticello MFD	22	Municipal	Combination
Drew	Selma RFD	12	Rural	Volunteer
Drew	Winchester MFD	8	Municipal	Volunteer

Appendix A (Continued)

County	Department Name *	Total Active Firefighting Personnel	Department Type **	Compensation Type
Faulkner	Beaver Fork FPD	18	Rural	Volunteer
Faulkner	Cato FPD	9	Rural	Volunteer
Faulkner	Centerville RFD	18	Rural	Volunteer
Faulkner	Conway MFD	108	Municipal	Paid
Faulkner	Damascus MFD	12	Municipal	Volunteer
Faulkner	Enola FPD	26	Rural	Volunteer
Faulkner	Greenbrier MFD	29	Municipal	Combination
Faulkner	Guy FPD	16	Rural	Volunteer
Faulkner	Highway 286 East RFD	24	Rural	Volunteer
Faulkner	Hilltop FPD	19	Rural	Volunteer
Faulkner	Holland MFD	9	Municipal	Volunteer
Faulkner	Liberty RFD	15	Rural	Volunteer
Faulkner	Mayflower MFD	16	Municipal	Volunteer
Faulkner	Mount Vernon FPD	15	Rural	Volunteer
Faulkner	Pine Village FPD	12	Rural	Volunteer
Faulkner	Rose Bud VFD	10	Rural	Volunteer
Faulkner	Quitman MFD	19	Municipal	Volunteer
Faulkner	Twin Groves MFD	11	Municipal	Volunteer
Faulkner	Vilonia FD	30	Municipal	Combination
Faulkner	Wescon FPD	23	Rural	Volunteer
Faulkner	Wooster FPD	23	Rural	Volunteer
Franklin	Altus MFD	15	Municipal	Combination
Franklin	Altus RFD	15	Rural	Volunteer
Franklin	Barnes RFD	12	Rural	Volunteer
Franklin	Branch City Municipal VFD	12	Municipal	Volunteer
Franklin	Branch RFD	12	Rural	Volunteer
Franklin	Cecil RFD	18	Rural	Volunteer
Franklin	Charleston Municipal VFD	19	Municipal	Volunteer
Franklin	Charleston Rural	19	Rural	Volunteer
Franklin	Oak Bend - Etna RFD	8	Rural	Volunteer
Franklin	Ozark MFD	20	Municipal	Combination
Franklin	Pleasant View RFD	9	Rural	Volunteer
Franklin	South Ozark - Webb City RFD	14	Rural	Volunteer
Franklin	Watalula RFD	15	Rural	Volunteer
Fulton	9 Mile Ridge RFD	7	Rural	Volunteer
Fulton	Byron RFD	8	Rural	Volunteer
Fulton	Camp RFD	10	Rural	Volunteer
Fulton	Cherokee Village MFD	23	Municipal	Combination
Fulton	Hardy FD	20	Municipal	Volunteer
Fulton	Glencoe RFD	16	Unknown	Unknown
Fulton	Mammoth Spring MFD	27	Municipal	Volunteer
Fulton	Morrison RFD	13	Rural	Volunteer
Fulton	Saddle RFD	18	Rural	Volunteer
Fulton	Salem MFD	13	Municipal	Volunteer
Fulton	Sturkie RFD	17	Rural	Volunteer
Fulton	Viola MFD	11	Municipal	Volunteer
Fulton	Wirth RFD	22	Rural	Volunteer

Appendix A (Continued)

County	Department Name *	Total Active Firefighting Personnel	Department Type **	Compensation Type
Garland	Buckville RFD	11	Rural	Volunteer
Garland	Fountain Lake RFD	10	Rural	Volunteer
Garland	Highway 70 West RFD	17	Rural	Volunteer
Garland	Hot Springs MFD	77	Municipal	Paid
Garland	Hot Springs Village RFD	25	Rural	Combination
Garland	Jessieville RFD	28	Rural	Volunteer
Garland	Lake Hamilton RFD	19	Rural	Volunteer
Garland	Lonsdale Rural VFD	19	Rural	Volunteer
Garland	Morning Star RFD	25	Rural	Volunteer
Garland	Mountain Pine MFD	14	Rural	Volunteer
Garland	Piney RFD	34	Rural	Volunteer
Grant	Belfast Palestine RFD	7	Rural	Volunteer
Grant	Calvert Township FPD	16	Rural	Volunteer
Grant	Cane Creek RFD	16	Rural	Volunteer
Grant	Center Grove RFD	12	Rural	Volunteer
Grant	Grapevine RFD	7	Rural	Volunteer
Grant	Hensley FPD	18	Rural	Volunteer
Grant	Leola MFD	10	Municipal	Volunteer
Grant	Poyen MFD	10	Municipal	Volunteer
Grant	Prattsville MFD	10	Municipal	Volunteer
Grant	Sheridan MFD	27	Municipal	Paid on Call
Grant	Tull MFD	12	Municipal	Volunteer
Greene	Delaplaine MFD	8	Municipal	Volunteer
Greene	Lafe MFD	16	Municipal	Paid on Call
Greene	Marmaduke MFD	20	Unknown	Unknown
Greene	Northeast Greene County	22	Rural	Volunteer
Greene	Oak Grove Heights MFD	17	Municipal	Volunteer
Greene	Paragould MFD	42	Municipal	Paid
Greene	Philadelphia FPD	14	Rural	Volunteer
Greene	South Greene County Rural VFD	23	Rural	Volunteer
Greene	Western Greene County FPD	30	Rural	Volunteer
Hempstead	Bingen RFD	13	Rural	Volunteer
Hempstead	Blevins MFD	6	Municipal	Volunteer
Hempstead	Columbus RFD	7	Rural	Volunteer
Hempstead	Cross Roads RFD	15	Rural	Volunteer
Hempstead	DeAnn RFD	8	Rural	Volunteer
Hempstead	Fulton MFD	8	Municipal	Volunteer
Hempstead	Hope MFD	22	Municipal	Combination
Hempstead	Ozan RFD	8	Rural	Volunteer
Hempstead	Patmos MFD	10	Municipal	Volunteer
Hempstead	Perrytown MFD	10	Municipal	Volunteer
Hempstead	Saratoga RFD	6	Rural	Volunteer
Hempstead	Southeast RFD	7	Rural	Volunteer
Hempstead	Springhill RFD	11	Rural	Volunteer
Hempstead	Washington MFD	7	Municipal	Volunteer
Hempstead	Yancey RFD	9	Rural	Volunteer

Appendix A (Continued)

County	Department Name *	Total Active Firefighting Personnel	Department Type **	Compensation Type
Hot Spring	Bismarck RFD	19	Rural	Volunteer
Hot Spring	Bonnerdale FPD	22	Rural	Volunteer
Hot Spring	Glen Rose FPD	15	Rural	Volunteer
Hot Spring	Lono - Rolla FPD	7	Rural	Volunteer
Hot Spring	Magnet Cove Area Fire Protection Assoc.	10	Rural	Volunteer
Hot Spring	Malvern MFD	22	Municipal	Combination
Hot Spring	New DeRoche RFD	9	Rural	Volunteer
Hot Spring	Ouachita RFD	10	Rural	Volunteer
Hot Spring	Point Cedar VFD	13	Rural	Volunteer
Hot Spring	Rockport FPD	18	Rural	Volunteer
Hot Spring	South Malvern RFD	24	Rural	Volunteer
Hot Spring	Southwest RFD	12	Rural	Volunteer
Howard	Athens RFD	8	Rural	Volunteer
Howard	Center Point RFD	16	Rural	Volunteer
Howard	County Line RFD	11	Rural	Volunteer
Howard	Mineral Springs MFD	8	Municipal	Volunteer/Paid on Call
Howard	Nashville MFD	22	Municipal	Volunteer/Paid on Call
Howard	Saratoga RFD	6	Rural	Volunteer
Howard	Umpire RFD	10	Rural	Volunteer
Independence	Batesville MFD	26	Municipal	Combination
Independence	Bethesda RFD	20	Rural	Volunteer
Independence	Cave City MFD	28	Municipal	Volunteer
Independence	Charlotte RFD	12	Rural	Volunteer
Independence	Cord RFD	8	Rural	Volunteer
Independence	Cushman RFD	15	Rural	Volunteer
Independence	Desha RFD	20	Rural	Volunteer
Independence	Floral RFD	18	Rural	Volunteer
Independence	Newark MFD	17	Municipal	Volunteer
Independence	Northside RFD	17	Rural	Volunteer
Independence	Oil Trough MFD	19	Municipal	Volunteer
Independence	Pleasant Plains	17	Municipal	Volunteer
Independence	Ruddell Hill RFD	14	Municipal	Volunteer
Independence	Saffell RFD	16	Rural	Volunteer
Independence	Southside RFD	26	Rural	Volunteer
Independence	Sulphur Rock RFD	14	Rural	Volunteer
Independence	Union Hill - Thida RFD	16	Rural	Volunteer
Izard	Allison - Sylamore	17	Rural	Volunteer
Izard	Calico Rock MFD	10	Municipal	Volunteer
Izard	Franklin MFD	8	Municipal	Volunteer
Izard	Guion MFD	6	Municipal	Volunteer
Izard	Horseshoe Bend MFD	18	Municipal	Volunteer
Izard	Melbourne Municipal VFD	21	Municipal	Volunteer
Izard	Mount Pleasant MFD	15	Municipal	Volunteer
Izard	Oxford MFD	17	Municipal	Volunteer
Izard	Pineville MFD	30	Municipal	Volunteer
Izard	Ruthie Mountain RFD	17	Rural	Volunteer
Izard	Zion VFD	18	Rural	Volunteer

Appendix A (Continued)

County	Department Name *	Total Active Firefighting Personnel	Department Type **	Compensation Type
Jackson	Bradford MFD	11	Municipal	Volunteer
Jackson	8 Mile RFD	6	Rural	Volunteer
Jackson	Diaz MFD	20	Municipal	Volunteer
Jackson	Grubbs RFD	18	Rural	Volunteer
Jackson	Jacksonport RFD	17	Rural	Volunteer
Jackson	Newport MFD	34	Municipal	Combination
Jackson	Pleasant Plains	17	Rural	Volunteer
Jackson	Richwoods RFD	7	Rural	Volunteer
Jackson	Swifton MFD	17	Municipal	Volunteer
Jackson	Union Hill - Thida	16	Rural	Volunteer
Jackson	Tuckerman MFD	25	Municipal	Volunteer
Jackson	Velvet Ridge	8	Rural	Volunteer
Jefferson	Alzheimer MFD	11	Municipal	Volunteer
Jefferson	Hardin RFD	15	Rural	Volunteer
Jefferson	Humphrey MFD	18	Rural	Volunteer
Jefferson	Island Harbor RFD	9	Rural	Volunteer
Jefferson	Linwood/Moscow RFD	14	Rural	Volunteer
Jefferson	Pine Bluff MFD	100	Municipal	Paid
Jefferson	Redfield MFD	19	Municipal	Volunteer
Jefferson	Sherrill MFD	8	Municipal	Volunteer
Jefferson	Southeast RFD	6	Rural	Volunteer
Jefferson	Tucker RFD	6	Rural	Volunteer
Jefferson	Wabbaseka RFD	9	Rural	Volunteer
Jefferson	Watson Chapel RFD	25	Rural	Volunteer
Jefferson	White Hall MFD	25	Municipal	Volunteer
Johnson	Clarksville MFD	21	Municipal	Volunteer/Paid on Call
Johnson	Coal Hill MFD	14	Municipal	Volunteer
Johnson	Johnson Co. RFD #1	8	Rural	Volunteer
Johnson	Johnson Co. RFD #2	13	Rural	Volunteer
Johnson	Johnson Co. RFD #7	10	Rural	Volunteer
Johnson	Johnson Co. RFD #6	15	Rural	Volunteer
Johnson	Johnson Co. RFD #8	15	Rural	Volunteer
Johnson	Knoxville MFD	12	Municipal	Volunteer
Johnson	Lamar MFD	15	Municipal	Volunteer
Johnson	RFD 5	18	Rural	Volunteer
Johnson	RFD 9	12	Rural	Volunteer
Johnson	RFD 10	16	Rural	Volunteer
Johnson	RFD 3	7	Rural	Volunteer
Lafayette	Bradley MFD	15	Municipal	Volunteer
Lafayette	Lake Erling RFD	10	Rural	Volunteer
Lafayette	Lewisville RFD	18	Rural	Volunteer
Lafayette	Mars Hill RFD	7	Rural	Volunteer
Lafayette	Midway/Boyd Hill RFD	6	Rural	Volunteer
Lafayette	River Bend RFD	11	Rural	Volunteer
Lafayette	Stamps MFD	21	Municipal	Volunteer
Lafayette	Walker Creek RFD	7	Rural	Volunteer

Appendix A (Continued)

County	Department Name *	Total Active Firefighting Personnel	Department Type **	Compensation Type
Lawrence	Alicia MFD	9	Municipal	Volunteer
Lawrence	Black Rock VFD	19	Municipal	Volunteer
Lawrence	Hoxie MFD	22	Municipal	Volunteer
Lawrence	Imboden MFD	23	Municipal	Volunteer
Lawrence	Lynn FPD	15	Rural	Volunteer
Lawrence	Portia Municipal VFD	12	Municipal	Volunteer
Lawrence	Ravenden MFD	17	Municipal	Volunteer
Lawrence	Saffell RFD	16	Rural	Volunteer
Lawrence	Sedgwick RFD	12	Rural	Volunteer
Lawrence	Smithville RFD	6	Rural	Volunteer
Lawrence	Strawberry MFD	15	Municipal	Volunteer
Lawrence	Walnut Ridge MFD	30	Municipal	Combination
Lee	Haynes	10	Rural	Volunteer
Lee	Lee County RFD	22	Rural	Volunteer
Lee	Marianna MFD	24	Municipal	Volunteer
Lee	Moro MFD	8	Municipal	Volunteer
Lee	Rondo MFD	6	Municipal	Volunteer
Lincoln	Cornerville RFD	17	Rural	Volunteer
Lincoln	Cummins RFD	12	Rural	Volunteer
Lincoln	Garnett RFD	24	Rural	Volunteer
Lincoln	Glendale RFD	16	Rural	Volunteer
Lincoln	Gould MFD	15	Municipal	Volunteer
Lincoln	Grady MFD	15	Municipal	Volunteer
Little River	Alleene RFD	8	Rural	Volunteer
Little River	Ashdown MFD	23	Municipal	Volunteer/Paid on Call
Little River	Cerro - Gordo RFD	7	Rural	Volunteer
Little River	Foreman MFD	6	Municipal	Volunteer
Little River	Oak Hill RFD	14	Rural	Volunteer
Little River	Ogden MFD	6	Municipal	Volunteer
Little River	Richmond RFD	15	Rural	Volunteer
Little River	Wilton MFD	8	Municipal	Volunteer
Little River	Winthrop MFD	8	Municipal	Volunteer
Little River	Yarborough RFD	18	Rural	Volunteer
Logan	Blue Mountain MFD	7	Municipal	Volunteer
Logan	Blue Mountain Rural	7	Rural	Volunteer
Logan	Delaware RFD	17	Rural	Volunteer
Logan	Driggs RFD	8	Rural	Volunteer
Logan	Grayson RFD	8	Rural	Volunteer
Logan	lone FPD	10	Rural	Volunteer
Logan	Magazine Municipal	15	Municipal	Volunteer
Logan	Magazine Rural Fire Protection Assoc.	19	Rural	Volunteer
Logan	New Blaine RFD	8	Rural	Volunteer
Logan	Paris MFD	18	Municipal	Volunteer
Logan	Ratcliff MFD	13	Municipal	Volunteer
Logan	Roseville RFD	12	Rural	Volunteer
Logan	Scranton RFD	12	Rural	Volunteer
Logan	Subiaco - Crossroads RFD	15	Rural	Volunteer
Logan	Sugar Grove RFD	10	Rural	Volunteer
Logan	West Logan Booneville RFD	14	Rural	Volunteer

Appendix A (Continued)

County	Department Name *	Total Active Firefighting Personnel	Department Type **	Compensation Type
Lonoke	Austin MFD	13	Municipal	Volunteer
Lonoke	Butlerville RFD	16	Rural	Volunteer
Lonoke	CS&Z RFD	15	Rural	Volunteer
Lonoke	Cabot MFD	41	Municipal	Paid
Lonoke	Carlisle MFD	21	Municipal	Volunteer
Lonoke	Coy MFD	9	Municipal	Volunteer
Lonoke	England MFD	20	Municipal	Volunteer
Lonoke	Humnoke MFD	10	Municipal	Volunteer
Lonoke	Keo RFD	10	Municipal	Volunteer
Lonoke	Lonoke MFD	17	Municipal	Volunteer
Lonoke	Mountain Springs FPD	14	Rural	Volunteer
Lonoke	Scott FPD	12	Rural	Volunteer
Lonoke	South Bend FPD	27	Unknown	Unknown
Lonoke	Ward MFD	20	Municipal	Volunteer
Madison	Bohannon RFD	6	Rural	Volunteer
Madison	Clifty RFD	19	Rural	Volunteer
Madison	Forum - Alabam RFD	11	Rural	Volunteer
Madison	Hindsville RFD	19	Rural	Volunteer
Madison	Huntsville MFD	20	Municipal	Volunteer
Madison	Japton RFD	16	Rural	Volunteer
Madison	Kingston RFD	19	Rural	Volunteer
Madison	Marble RFD	10	Rural	Volunteer
Madison	Pettigrew RFD	8	Rural	Volunteer
Madison	St. Paul MFD	11	Municipal	Volunteer
Madison	Wesley RFD	14	Rural	Volunteer
Madison	Witter - Aurora RFD	10	Rural	Volunteer
Marion	Bruno FPD	28	Rural	Volunteer
Marion	Bull Shoals VFD	17	Municipal	Volunteer/Combination
Marion	Fairview RFD	8	Rural	Volunteer
Marion	Flippin MFD	8	Municipal	Volunteer
Marion	Lakeway RFD	9	Rural	Volunteer
Marion	Lazy Acres RFD	16	Rural	Volunteer
Marion	Oakland Promise Land	23	Rural	Volunteer
Marion	Peel RFD	13	Rural	Volunteer
Marion	Pine Mountain RFD	9	Rural	Volunteer
Marion	Pyatt RFD	18	Rural	Volunteer
Marion	Ralph Caney RFD	11	Rural	Volunteer
Marion	Summit MFD	13	Municipal	Volunteer
Marion	Summit RFD	13	Rural	Volunteer
Marion	Yellville	15	Municipal	Volunteer
Marion	Yellville Rural VFD	16	Rural	Volunteer
Miller	Boggy Creek RFD	10	Rural	Volunteer
Miller	Booker Bridge RFD	8	Rural	Volunteer
Miller	Bright Star RFD	7	Rural	Volunteer
Miller	Doddridge RFD	11	Rural	Volunteer
Miller	Garland MFD	10	Municipal	Volunteer
Miller	Genoa RFD	10	Rural	Volunteer
Miller	Mandeville RFD	6	Rural	Volunteer
Miller	Pleasant Hill RFD	6	Rural	Volunteer
Miller	Satellite - Hwy 196 RFD	8	Rural	Volunteer
Miller	Texarkana MFD	56	Municipal	Paid
Miller	Trinity RFD	7	Rural	Volunteer

Appendix A (Continued)

County	Department Name *	Total Active Firefighting Personnel	Department Type **	Compensation Type
Mississippi	Armored - Huffman RFD	15	Rural	Volunteer
Mississippi	Blytheville FD	30	Municipal	Paid
Mississippi	Burdette RFD	12	Rural	Volunteer
Mississippi	Dell MFD	17	Municipal	Volunteer
Mississippi	Dyess MFD	12	Municipal	Volunteer
Mississippi	Etowah MFD	11	Municipal	Volunteer
Mississippi	Gosnell MFD	22	Municipal	Volunteer
Mississippi	Joiner MFD	12	Municipal	Volunteer
Mississippi	Keiser MFD	17	Municipal	Volunteer
Mississippi	Leachville MFD	24	Municipal	Volunteer
Mississippi	Luxora MFD	13	Municipal	Volunteer
Mississippi	Manila MFD	24	Municipal	Volunteer
Mississippi	Osceola MFD	21	Municipal	Combination
Mississippi	Wilson MFD	16	Municipal	Volunteer
Monroe	Brinkley MFD	15	Municipal	Combination
Monroe	Clarendon MFD	21	Municipal	Volunteer
Monroe	East Monroe County RFD	14	Rural	Volunteer
Monroe	Holly Grove MFD	12	Municipal	Volunteer
Monroe	Maddox Bay	32	Rural	Volunteer
Monroe	Roe RFD	15	Rural	Volunteer
Montgomery	Caddo Gap RFD	6	Rural	Volunteer
Montgomery	Joplin RFD	25	Rural	Volunteer
Montgomery	Mount Ida MFD	14	Municipal	Volunteer
Montgomery	Norman VFD	14	Municipal	Volunteer
Montgomery	Oden RFD	22	Rural	Volunteer
Montgomery	Pine Ridge RFD	10	Rural	Volunteer
Montgomery	Sims RFD	16	Rural	Volunteer
Montgomery	South Fork Center RFD	12	Rural	Volunteer
Montgomery	Sulphur - Laverna RFD	12	Rural	Volunteer
Nevada	Bluff City MFD	6	Municipal	Volunteer
Nevada	Bodcaw MFD	14	Municipal	Volunteer
Nevada	Cale MFD	8	Municipal	Volunteer
Nevada	Emmet MFD	14	Municipal	Volunteer
Nevada	Fairhills RFD	10	Rural	Volunteer
Nevada	Laneburg RFD	7	Rural	Volunteer
Nevada	Prescott MFD	16	Municipal	Volunteer/Paid on Call
Nevada	Rosston MFD	8	Municipal	Volunteer
Nevada	Willisville MFD	10	Municipal	Volunteer
Newton	Compton RFD	15	Rural	Volunteer
Newton	Deer RFD	12	Rural	Volunteer
Newton	Hasty RFD	15	Rural	Volunteer
Newton	Jasper MFD	18	Municipal	Volunteer
Newton	Lurton/Pelsor RFD	9	Rural	Volunteer
Newton	Mount Judea RFD	10	Rural	Volunteer
Newton	Parthenon RFD	11	Rural	Volunteer
Newton	Ponca RFD	9	Rural	Volunteer
Newton	Western Grove MFD	20	Municipal	Volunteer

Appendix A (Continued)

County	Department Name *	Total Active Firefighting Personnel	Department Type **	Compensation Type
Ouachita	Bearden MFD	12	Municipal	Volunteer
Ouachita	Buena Vista RFD	12	Rural	Volunteer
Ouachita	Camden MFD	34	Municipal	Combination
Ouachita	Chidester MFD	12	Municipal	Volunteer
Ouachita	East Camden MFD	17	Municipal	Volunteer
Ouachita	Elliott RFD	11	Rural	Volunteer
Ouachita	Frenchport RFD	20	Rural	Volunteer
Ouachita	Louann MFD	10	Municipal	Volunteer
Ouachita	Ouachita Fire District 1 FPD	15	Rural	Volunteer
Ouachita	Stephens MFD	14	Municipal	Volunteer
Ouachita	Upper White Oak RFD	10	Rural	Volunteer
Perry	Adona MFD	8	Municipal	Volunteer
Perry	Bigelow MFD	11	Municipal	Volunteer
Perry	Casa MFD	21	Municipal	Volunteer
Perry	Cherry Hill RFD	14	Rural	Volunteer
Perry	Harris Brake FPD	15	Rural	Volunteer
Perry	Hollis RFD	10	Rural	Volunteer
Perry	Houston MFD	12	Municipal	Volunteer
Perry	Nimrod RFD	10	Rural	Volunteer
Perry	Perry MFD	12	Municipal	Volunteer
Perry	Perryville MFD	16	Municipal	Volunteer
Perry	Stony Point RFD	12	Rural	Volunteer
Perry	West Pulaski FPD	61	Rural	Volunteer
Perry	Williams Junction RFD	10	Rural	Volunteer
Phillips	Barton RFD	34	Rural	Volunteer
Phillips	Elaine MFD	17	Municipal	Volunteer
Phillips	Helena & West Helena MFD	31	Municipal	Combination
Phillips	Lake View MFD	6	Municipal	Volunteer
Phillips	Marvell RFD	9	Rural	Volunteer
Phillips	Marvell MFD	20	Municipal	Volunteer
Phillips	South Phillips County FD	17	Rural	Volunteer
Pike	Antoine MFD	8	Municipal	Volunteer
Pike	Delight RFD	7	Rural	Volunteer
Pike	Glenwood MFD	19	Municipal	Volunteer
Pike	Kirby RFD	16	Rural	Volunteer
Pike	Langley RFD	8	Rural	Volunteer
Pike	Murfreesboro MFD	14	Municipal	Volunteer
Pike	Nathan RFD	9	Rural	Volunteer
Pike	New Hope RFD	18	Rural	Volunteer
Poinsett	Central FPD	10	Rural	Volunteer
Poinsett	Fisher MFD	14	Municipal	Volunteer
Poinsett	Harrisburg MFD	15	Municipal	Volunteer
Poinsett	Lepanto MFD	23	Municipal	Volunteer
Poinsett	Marked Tree MFD	25	Municipal	Volunteer
Poinsett	Trumann MFD	20	Municipal	Combination
Poinsett	Tyronza MFD	23	Municipal	Volunteer
Poinsett	Weiner MFD	15	Municipal	Volunteer

Appendix A (Continued)

County	Department Name *	Total Active Firefighting Personnel	Department Type **	Compensation Type
Polk	Acorn RFD	11	Rural	Volunteer
Polk	Big Fork RFD	7	Rural	Volunteer
Polk	Board Camp RFD	13	Rural	Volunteer
Polk	Cherry Hill RFD	12	Rural	Volunteer
Polk	Cove RFD	15	Rural	Volunteer
Polk	Cove MFD	10	Municipal	Volunteer
Polk	Dallas Valley RFD	17	Rural	Volunteer
Polk	Grannis	10	Municipal	Volunteer
Polk	Grannis MFD	12	Municipal	Volunteer
Polk	Hatfield RFD	12	Rural	Volunteer
Polk	Hatfield MFD	12	Rural	Volunteer
Polk	Ink RFD	10	Rural	Volunteer
Polk	Mena MFD	24	Municipal	Volunteer
Polk	Potter RFD	9	Rural	Volunteer
Polk	Rocky RFD	8	Rural	Volunteer
Polk	Shady RFD	8	Rural	Volunteer
Polk	Shady Grove RFD	13	Rural	Volunteer
Polk	Wickes City FD	16	Municipal	Volunteer
Polk	Wickes Rural VFD	16	Rural	Volunteer
Pope	Appleton RFD	10	Rural	Volunteer
Pope	Atkins MFD	22	Municipal	Volunteer
Pope	Bayliss RFD	12	Rural	Volunteer
Pope	Crow Mountain FPD	21	Rural	Volunteer
Pope	Dover RFD	8	Rural	Volunteer
Pope	Dover MFD	15	Municipal	Volunteer
Pope	Hatley RFD	9	Rural	Volunteer
Pope	Hector MFD	15	Municipal	Volunteer
Pope	Linker Mountain RFD	9	Rural	Volunteer
Pope	London RFD	12	Rural	Volunteer
Pope	Martin Township RFD	6	Rural	Volunteer
Pope	Moreland RFD	17	Rural	Volunteer
Pope	Pea Ridge RFD	11	Rural	Volunteer
Pope	Pottsville MFD	14	Municipal	Volunteer
Pope	Russellville MFD	53	Municipal	Paid
Pope	Witts Springs	10	Rural	Volunteer
Prairie	Biscoe RFD	10	Rural	Volunteer
Prairie	Brown Grove RFD	6	Rural	Volunteer
Prairie	Center Point RFD	6	Rural	Volunteer
Prairie	Cross Roads RFD	10	Rural	Volunteer
Prairie	De Valls Bluff MFD	17	Municipal	Volunteer
Prairie	Des Arc MFD	19	Municipal	Volunteer
Prairie	Hazen MFD	19	Municipal	Volunteer
Prairie	Northside RFD	16	Rural	Volunteer
Prairie	Oak Prairie RFD	10	Rural	Volunteer
Prairie	Peppers Lake VFD	7	Rural	Volunteer
Prairie	Sand Hill	13	Rural	Volunteer
Prairie	Ulm FD	19	Rural	Volunteer

Appendix A (Continued)

County	Department Name *	Total Active Firefighting Personnel	Department Type **	Compensation Type
Pulaski	Alexander FD	13	Municipal	Combination
Pulaski	Arch Street FPD	22	Unknown	Unknown
Pulaski	Crystal VFD	18	Rural	Volunteer
Pulaski	East Pulaski FPD	12	Rural	Volunteer
Pulaski	Gravel Ridge FPD	27	Rural	Paid
Pulaski	Hensley FPD	18	Rural	Volunteer
Pulaski	Highway 365 South FPD	6	Rural	Volunteer
Pulaski	Jacksonville MFD	63	Municipal	Paid
Pulaski	Lake Maumelle FPD	20	Municipal	Volunteer
Pulaski	Little Rock MFD	416	Municipal	Paid
Pulaski	Maumelle MFD	47	Municipal	Combination
Pulaski	McAlmont RFD	14	Rural	Combination
Pulaski	North Little Rock MFD	160	Municipal	Paid
Pulaski	North Pulaski FPD 15	35	Rural	Volunteer
Pulaski	Northeast Saline Co. FPD	10	Rural	Volunteer
Pulaski	Oak Grove FPD	22	Rural	Volunteer
Pulaski	Runyan Acres FPD	19	Rural	Volunteer
Pulaski	Scott FPD	12	Rural	Volunteer
Pulaski	Sherwood FPD	44	Rural	Paid
Pulaski	South Bend	27	Rural	Volunteer
Pulaski	Sweet Home RFD	8	Rural	Volunteer
Pulaski	West Pulaski County FPD	61	Rural	Volunteer
Pulaski	Williams Junction RFD	10	Rural	Volunteer
Randolph	Biggers - Reyno RFD	25	Rural	Volunteer
Randolph	Dalton RFD	14	Rural	Volunteer
Randolph	Maynard MFD	15	Municipal	Volunteer
Randolph	O'Kean MFD	13	Municipal	Volunteer
Randolph	Pocahontas RFD	24	Rural	Volunteer
Randolph	Pocahontas Municipal VFD	24	Municipal	Combination
Randolph	Ravenden Springs RFD	19	Rural	Volunteer
Randolph	Warm Springs RFD	13	Rural	Volunteer
Randolph	Water Valley RFD	14	Rural	Volunteer
St. Francis	Caldwell FPD	18	Municipal	Volunteer
St. Francis	Colt MFD	20	Municipal	Volunteer
St. Francis	Forrest City MFD	25	Municipal	Combination
St. Francis	Hughes MFD	15	Municipal	Volunteer
St. Francis	Newcastle MFD	11	Municipal	Volunteer
St. Francis	Palestine FPD	15	Municipal	Volunteer
St. Francis	Wheatley MFD	13	Municipal	Volunteer
St. Francis	Widener MFD	8	Municipal	Volunteer
Saline	Alexander	13	Rural	Combination
Saline	Bauxite	17	Municipal	Volunteer
Saline	Benton MFD	70	Municipal	Paid
Saline	Bryant MFD	48	Municipal	Paid
Saline	Collegeville RFD	23	Rural	Volunteer
Saline	Crow's Station RFD	18	Rural	Volunteer
Saline	Crystal Rural VFD	18	Rural	Volunteer
Saline	East End FPD	37	Rural	Volunteer
Saline	Haskell MFD	16	Municipal	Combination
Saline	Hot Springs Village RFD	25	Rural	Combination

Appendix A (Continued)

County	Department Name *	Total Active Firefighting Personnel	Department Type **	Compensation Type
Saline	Lake Norrell FPD	9	Rural	Volunteer
Saline	Lonsdale Rural VFD	19	Rural	Volunteer
Saline	Northeast Saline County FPD	10	Rural	Volunteer
Saline	Paron RFD	18	Rural	Volunteer
Saline	Salem RFD	33	Rural	Volunteer
Saline	Sardis FPD	14	Rural	Volunteer
Saline	Shannon Hills MFD	14	Municipal	Volunteer
Saline	Shaw RFD	16	Rural	Volunteer
Saline	Traskwood MFD	9	Municipal	Volunteer
Saline	Turtle Creek FPD	22	Rural	Volunteer
Saline	West Pulaski County FPD	61	Rural	Volunteer
Scott	Blackfork VFD	14	Rural	Volunteer
Scott	Blue Ball RFD	8	Rural	Volunteer
Scott	Boles RFD	10	Rural	Volunteer
Scott	Haletown RFD	6	Rural	Volunteer
Scott	Harvey/Nola RFD	14	Rural	Volunteer
Scott	Highway 250 RFD	19	Rural	Volunteer
Scott	Hon RFD	7	Rural	Volunteer
Scott	Lake Hinkle FPD	15	Rural	Volunteer
Scott	Nella RFD	11	Rural	Volunteer
Scott	Northwest Scott RFD	21	Rural	Volunteer
Scott	Parks RFD	9	Rural	Volunteer
Scott	State Line RFD	17	Rural	Volunteer
Scott	Waldron MFD	18	Municipal	Volunteer
Scott	Waldron Rural VFD	15	Rural	Volunteer
Scott	Winfield RFD	15	Rural	Volunteer
Scott	Y City RFD	15	Rural	Volunteer
Searcy	Chimes RFD	17	Rural	Volunteer
Searcy	Ha Ra Co. RFD	17	Rural	Volunteer
Searcy	Leslie MFD	8	Municipal	Volunteer
Searcy	Marshall MFD	25	Municipal	Volunteer
Searcy	Morning Star RFD	20	Rural	Volunteer
Searcy	Oxley RFD	10	Rural	Volunteer
Searcy	Pindall Gilbert & Saint Joe RFD	13	Rural	Volunteer
Searcy	Shady Grove RFD	21	Rural	Volunteer
Searcy	Western Grove MFD	20	Rural	Volunteer
Searcy	Witts Springs	10	Rural	Volunteer
Searcy	Witts Springs VFD	10	Rural	Volunteer
Sebastian	Barling MFD	21	Municipal	Combination
Sebastian	Big Creek RFD	17	Rural	Volunteer
Sebastian	Bonanza MFD	16	Municipal	Volunteer
Sebastian	Central City MFD	10	Municipal	Volunteer
Sebastian	EMP RFD	18	Rural	Combination
Sebastian	Fort Smith MFD	149	Municipal	Paid
Sebastian	Greenwood Rural RFD	10	Rural	Volunteer
Sebastian	Greenwood MFD	33	Municipal	Combination
Sebastian	Hackett MFD	23	Municipal	Volunteer

Appendix A (Continued)

County	Department Name *	Total Active Firefighting Personnel	Department Type **	Compensation Type
Sebastian	Hartford MFD	18	Municipal	Volunteer
Sebastian	Huntington MFD	11	Municipal	Volunteer
Sebastian	Lavaca MFD	14	Municipal	Volunteer
Sebastian	Mansfield MFD	10	Municipal	Volunteer
Sebastian	Midland Rural VFD	7	Rural	Volunteer
Sebastian	Milltown/Washburn RFD	8	Rural	Volunteer
Sebastian	Riverdale RFD	10	Rural	Volunteer
Sebastian	Sugarloaf - Slaytonville RFD	9	Rural	Volunteer
Sebastian	White Bluff RFD	24	Rural	Volunteer
Sevier	Ben Lomond MFD	11	Rural	Volunteer
Sevier	Central RFD	12	Rural	Volunteer
Sevier	Cossatot RFD	15	Rural	Volunteer
Sevier	De Queen MFD	25	Municipal	Combination
Sevier	Gillham MFD	10	Municipal	Volunteer
Sevier	Greens Chapel RFD	6	Rural	Volunteer
Sevier	Horatio MFD	21	Municipal	Volunteer
Sevier	Lockesburg MFD	10	Municipal	Volunteer
Sevier	Provo RFD	8	Rural	Volunteer
Sharp	Ash Flat MFD	19	Municipal	Combination
Sharp	Cave City MFD	28	Municipal	Volunteer
Sharp	Center RFD	12	Rural	Volunteer
Sharp	Cherokee Village MFD	23	Municipal	Combination
Sharp	Evening Shade MFD	10	Municipal	Volunteer
Sharp	Grange - Calamine RFD	17	Rural	Volunteer
Sharp	Hardy FD	20	Municipal	Combination
Sharp	Highland MFD	15	Municipal	Volunteer
Sharp	9 Mile Ridge RFD	7	Rural	Volunteer
Sharp	Ozark Acres RFD	12	Rural	Volunteer
Sharp	Sidney RFD	8	Rural	Volunteer
Sharp	Williford MFD	12	Municipal	Volunteer
Sharp	Wirth RFD	22	Rural	Volunteer
Sharp	Zion RFD	18	Rural	Volunteer
Stone	Allison-Sylamore RFD	17	Rural	Volunteer
Stone	Ben RFD	20	Rural	Volunteer
Stone	Dodd Mountain RFD	21	Rural	Volunteer
Stone	Fifty-Six MFD	10	Municipal	Volunteer
Stone	Fox RFD	15	Rural	Volunteer
Stone	Melrose RFD	10	Rural	Volunteer
Stone	Mountain View MFD	22	Municipal	Volunteer
Stone	Sixth District RFD	23	Rural	Volunteer
Stone	Sunnyland RFD	7	Rural	Volunteer
Stone	Timbo FPD	28	Rural	Volunteer
Union	Cairo RFD	15	Rural	Volunteer
Union	Calion MFD	18	Municipal	Volunteer
Union	El Dorado MFD	50	Municipal	Paid
Union	Faircrest RFD	16	Rural	Volunteer
Union	Hibanks RFD	11	Rural	Volunteer
Union	Huttig MFD	20	Municipal	Volunteer
Union	Junction City MFD	7	Municipal	Volunteer

Appendix A (Continued)

County	Department Name *	Total Active Firefighting Personnel	Department Type **	Compensation Type
Union	Lawson - Urbana RFD	18	Rural	Volunteer
Union	Mount Holly RFD	15	Rural	Volunteer
Union	Norphlet MFD	21	Municipal	Volunteer
Union	Old Union RFD	16	Rural	Volunteer
Union	Parkers Chapel RFD	20	Rural	Volunteer
Union	Strong MFD	16	Municipal	Volunteer
Union	Three Creeks RFD	15	Rural	Volunteer
Van Buren	Alread RFD	32	Rural	Volunteer
Van Buren	Bee Branch RFD	16	Rural	Volunteer
Van Buren	Botkinburg RFD	16	Rural	Volunteer
Van Buren	Burnt Ridge RFD	9	Rural	Volunteer
Van Buren	Chimes RFD	17	Rural	Volunteer
Van Buren	Choctaw RFD	28	Rural	Volunteer
Van Buren	Clinton MFD	25	Municipal	Volunteer
Van Buren	Culpepper RFD	9	Rural	Volunteer
Van Buren	Damascus MFD	12	Municipal	Volunteer
Van Buren	Dennard RFD	9	Rural	Volunteer
Van Buren	Fairfield Bay MFD	32	Municipal	Volunteer
Van Buren	Gravesville RFD	10	Rural	Volunteer
Van Buren	Highway 110 RFD	10	Rural	Volunteer
Van Buren	Morganton VFD	11	Rural	Volunteer
Van Buren	Scotland RFD	17	Rural	Volunteer
Van Buren	Shirley	16	Rural	Volunteer
Van Buren	Walnut Grove RFD	10	Rural	Volunteer
Washington	Boston Mountain RFD	15	Rural	Volunteer
Washington	Elkins MFD	28	Municipal	Volunteer
Washington	Evansville RFD	16	Rural	Volunteer
Washington	Farmington MFD	25	Municipal	Volunteer
Washington	Fayetteville MFD	119	Municipal	Paid
Washington	Goshen RFD	17	Rural	Volunteer
Washington	Johnson RFD	21	Rural	Combination
Washington	Lincoln MFD	27	Municipal	Volunteer
Washington	Morrow RFD	13	Rural	Volunteer
Washington	Nob Hill RFD	28	Rural	Volunteer
Washington	Prairie Grove MFD	20	Municipal	Volunteer
Washington	Round Mountain RFD	21	Rural	Volunteer
Washington	Springdale MFD	127	Municipal	Paid
Washington	Strickler RFD	9	Rural	Volunteer
Washington	Sunset RFD	11	Rural	Volunteer
Washington	Tontitown MFD	10	Rural	Volunteer
Washington	Tontitown RFD	23	Municipal	Volunteer
Washington	Wedington RFD	24	Rural	Volunteer
Washington	West Fork Municipal VFD	40	Rural	Volunteer
Washington	West Fork Rural VFD	40	Municipal	Volunteer
Washington	Wheeler RFD	27	Rural	Volunteer
Washington	White House RFD	19	Rural	Volunteer
White	Albion RFD	12	Rural	Volunteer
White	Antioch FPD	11	Rural	Volunteer
White	Bald Knob MFD	22	Municipal	Volunteer
White	Beebe FD	30	Municipal	Combination
White	Bradford MFD	11	Municipal	Volunteer
White	Center Hill FPD	18	Rural	Volunteer
White	El Paso RFD	17	Rural	Volunteer
White	Fairview RFD	14	Rural	Volunteer
White	Floyd RFD	14	Rural	Volunteer

Appendix A (Continued)

County	Department Name *	Total Active Firefighting Personnel	Department Type **	Compensation Type
White	Gamer RFD	19	Rural	Volunteer
White	Georgetown MFD	10	Municipal	Volunteer
White	Gum Springs RFD	16	Rural	Volunteer
White	Hickory Flat RFD	22	Rural	Volunteer
White	Higginson MFD	13	Municipal	Volunteer
White	Joy Community RFD	10	Rural	Volunteer
White	Judsonia MFD	13	Municipal	Volunteer
White	Kensett MFD	12	Municipal	Volunteer
White	Letona MFD	14	Municipal	Volunteer
White	McRae MFD	14	Municipal	Volunteer/Paid on Call
White	Mount Vernon	15	Rural	Volunteer
White	North White County RFD	30	Rural	Volunteer
White	Pangburn MFD	18	Municipal	Volunteer
White	Pleasant Plains	17	Rural	Volunteer
White	Rocky Point RFD	8	Rural	Volunteer
White	Rose Bud FPD	10	Rural	Volunteer
White	Russell MFD	16	Municipal	Volunteer
White	Searcy MFD	53	Municipal	Paid
White	Southeast White County RFD	8	Rural	Volunteer
White	Velvet Ridge FPD	8	Rural	Volunteer
Woodruff	Augusta MFD	21	Municipal	Volunteer
Woodruff	Cotton Plant MFD	6	Municipal	Volunteer
Woodruff	Hunter RFD	9	Municipal	Volunteer
Woodruff	McCrary MFD	21	Municipal	Volunteer
Woodruff	Patterson MFD	11	Municipal	Volunteer
Yell	Aly Chula RFD	10	Rural	Volunteer
Yell	Belleville MFD	17	Municipal	Volunteer
Yell	Briggsville RFD	11	Rural	Volunteer
Yell	Chickalah RFD	12	Rural	Volunteer
Yell	Danville Municipal VFD	22	Municipal	Volunteer
Yell	Dardanelle Municipal	18	Municipal	Volunteer/Paid on Call
Yell	Dardanelle RFD	18	Rural	Volunteer
Yell	Dutch Creek RFD	10	Rural	Volunteer
Yell	Galla Rock RFD	18	Rural	Volunteer
Yell	Havana MFD	12	Municipal	Volunteer
Yell	Mt. Nebo Rural VFD	8	Rural	Volunteer
Yell	Ola MFD	15	Municipal	Volunteer
Yell	Plainview MFD	18	Municipal	Volunteer
Yell	Rover RFD	20	Rural	Volunteer
Yell	West Fourche RFD	10	Rural	Volunteer
		16,165		

FD = Fire Department FPD = Fire Protection District MFD = Municipal Fire Department
RFD = Rural Fire Department VFD = Volunteer Fire Department

* As indicated in official Act 833 funding documentation.

** Fire departments in Arkansas are classified as "rural" or "municipal," aside from the term used in a department's name. Rural departments are supported primarily through volunteer contributions from local property owners or created by the majority of landowners in a designated area and authorized to extend an annual assessment on all property owners in the established district. Municipal departments are formed by municipal ordinances.

Source: Department of Public Safety – Division of Emergency Management – Office of Fire Protection Services (unaudited by Arkansas Legislative Audit)

Appendix B

Ark. Code Ann. § 20-22-1006 Arkansas Fire Protection Services Resources Plan

(a) The Office of Fire Protection Services shall facilitate and coordinate, with the cooperation and assistance of the fire services agencies listed in § 20-22-1004(c), the development and formulation of a comprehensive program for the orderly coordination, cooperation, and development of resources of the State of Arkansas and its local governments, to be referred to as the "Arkansas Fire Protection Services Resources Plan". The plan shall include plans:

(1) For providing fire services in the various rural areas of this state which do not have available the benefits or services of an organized or voluntary firefighting program;

(2) For updating and improving fire services in urban, suburban, and rural areas which have fire services but which need improvements and for assisting existing organized or volunteer firefighting services in making those improvements;

(3) On the type, needs, and means to procure firefighting vehicles and equipment for fire services agencies of local governments;

(4) On developing training programs designed to instruct and train firefighters at the Arkansas Fire Training Academy to be employed or used by both urban and rural organized and volunteer fire services agencies;

(5) To coordinate the efforts of all state and local government fire services agencies for the purpose of making maximum use of the services and resources for the prevention and mitigation of injury and damage caused by fire and other hazards;

(6) To measure the prompt and effective response to fires and other hazards and disasters;

(7) To identify areas particularly vulnerable to fire and hazards and other disasters; and

(8) To make recommendations for improvements in the firefighting, prevention, training, mitigation, and adjunct services for state and local fire services agencies.

(b) In coordinating the preparation and revision of the plan, the office shall seek the advice and assistance of and cooperate with state agencies, including the State Fire Marshal, the Arkansas Fire Training Academy, and the Rural Fire Protection Service, with all fire services agencies of local governments, with business, labor, industry, agriculture, civic and volunteer organizations, and with community leaders.

(c) The plan or any part thereof may be incorporated into regulations of the office, the Arkansas Department of Emergency Management, or executive orders which have the force and effect of law.

Appendix C

Letter from Insurance Services Offices, Inc. (ISO), in Response to a Request from Arkansas Legislative Audit for ISO ratings for Arkansas Fire Departments

MITCHELL WILLIAMS

Derrick W. Smith
Direct Dial: 501-688-8845
Fax: 501-918-7845
E-mail: dsmith@mwlaw.com

425 West Capitol Avenue, Suite 1800
Little Rock, Arkansas 72201-3525
Telephone: 501-688-8800
Fax: 501-688-8807

April 1, 2022

Via Email (Kevin.White@arklegaudit.gov)

Kevin White, JD, CPA
Staff Auditor/Assistant Legal Counsel
Arkansas Legislative Audit
500 Woodlane Street, Suite 172
Little Rock, AR 72201-1099

Dear Mr. White:

This law firm represents Insurance Services Office Inc. ("ISO") in connection with your request for certain information related to its ratings of Arkansas fire departments. Specifically, in a March 9, 2022 email to Greg Gordon and Ron Myers, you asked ISO to assist in your efforts to update a 2003 Arkansas Legislative Audit special report by providing the most recent ISO ratings for all Arkansas fire departments and the date of the most recent ISO certifications/rating update. While ISO is not aware of the circumstances that led to the publication of the information included in Appendix A to the 2003 special report, ISO respectfully declines to provide the requested information as such information constitutes a trade secret.

Arkansas law defines a trade secret as:

information, including a formula, pattern, compilation, program, device, method, technique, or process, that:

- (A) Derives independent economic value, actual or potential, from not being generally known to, and not being readily ascertainable by proper means by, other persons who can obtain economic value from its disclosure or use; and
- (B) Is the subject of efforts that are reasonable under the circumstances to maintain its secrecy.¹

With regard to assessing whether a trade secret exists under this statute, Arkansas courts have applied the following six factors:

- (1) the extent to which the information is known outside the business;

¹ Ark. Code Ann. § 4-75-601(4).

Kevin White, JD, CPA
April 1, 2022
Page 2

- (2) the extent to which the information is known by employees and others involved in the business;
- (3) the extent of measures taken by the plaintiff to guard the secrecy of the information;
- (4) the value of the information to the plaintiff and its competitors;
- (5) the amount of effort or money expended by the plaintiff in developing the information; and
- (6) the ease or difficulty with which the information could properly be acquired by others.²

Outside of ISO, there is no single source of the requested information. Except for reports that contain the requested information which are made available to ISO's customers under license agreements that contain confidentiality provisions limiting the extent of further distribution, ISO does not make its ratings of Arkansas fire departments or related information available to customers nor to any other party outside of ISO other than to relevant local community officials to whom the ratings pertain. Accordingly, the information is not widely known outside of ISO's business and the first element is satisfied.

With regard to the second element, the information is only available to a limited number of ISO employees. Likewise, the information is not known outside of ISO's business. As a result, the second element is also satisfied.

With regard to the third element, the individual records are kept secured within ISO and access is only granted to employees who have a need to know such information. As for external access, ISO's operating procedures do not contemplate ISO sharing the information with persons other than local community officials to whom the information relates. Therefore, significant measures are taken to guard the secrecy of the information.

With respect to the fourth, fifth, and sixth elements, release of the requested information would cause substantial competitive harm to ISO. The ratings are proprietary and are made available to ISO's customers pursuant to license agreements that provide for payment of license fees in consideration for access rights. As such, the information constitutes valuable commercial information of ISO. While ISO has a number of competitors (most of which entered the market following the release of the 2003 report), none of those competitors currently make available a product or service that is based on comparable detailed information used to develop the requested ratings. ISO makes available a superior product as a result of the cost ISO invests in connection with obtaining, analyzing, and applying the information compiled in reports used to develop the

² *Freeman v. Brown Hiller, Inc.*, 281, S.W.3d 749 (Ark. App. 2008).

Kevin White, JD, CPA
April 1, 2022
Page 3

requested ratings. The disclosure of a compilation of ratings reports could result in ISO's competitors having access to material compiled and prepared at a substantial cost to ISO that they could use to enhance their competing products and services to the detriment of ISO's related products and services and expose ISO to substantial competitive harm.

In view of the foregoing, we respectfully submit that the requested information constitutes a trade secret of ISO that should not be released.

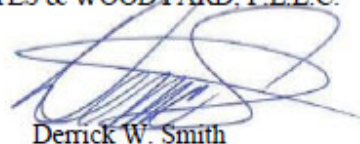
As an alternative to the requested information, ISO can provide certain academic data that could assist Legislative Audit in updating the 2003 special report. ISO can also provide certain aggregated information. Specifically, ISO can provide information detailing the number of Arkansas fire departments that have earned each of its class ratings. Likewise, ISO can provide a map depicting general classifications throughout the state. Examples of these types of aggregated information are attached hereto.

Once you have had an opportunity to review the enclosed information, please do not hesitate to contact me if you or your colleagues have any questions or require any clarification.

Sincerely,

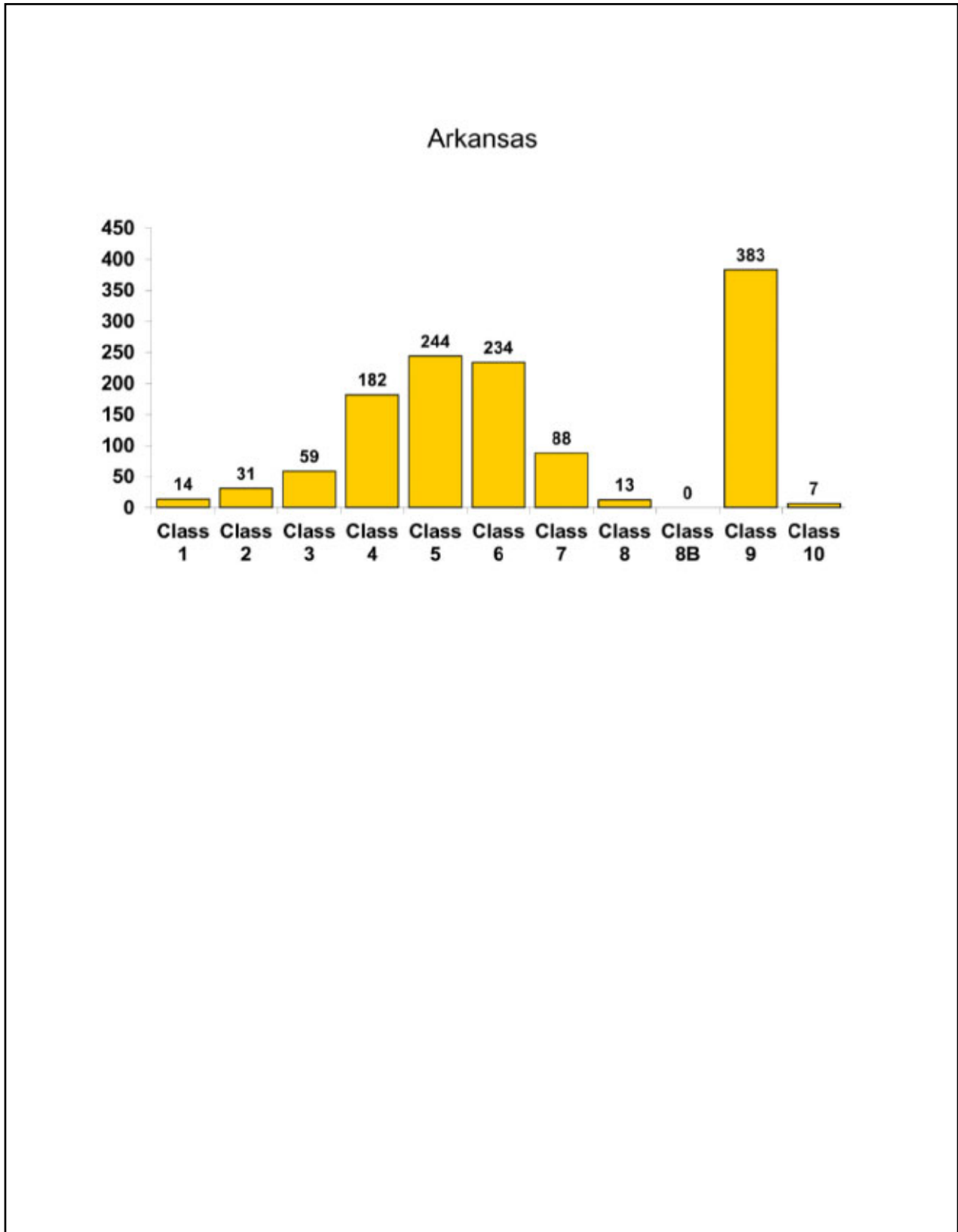
MITCHELL, WILLIAMS, SELIG,
GATES & WOODYARD, P.L.L.C.

By

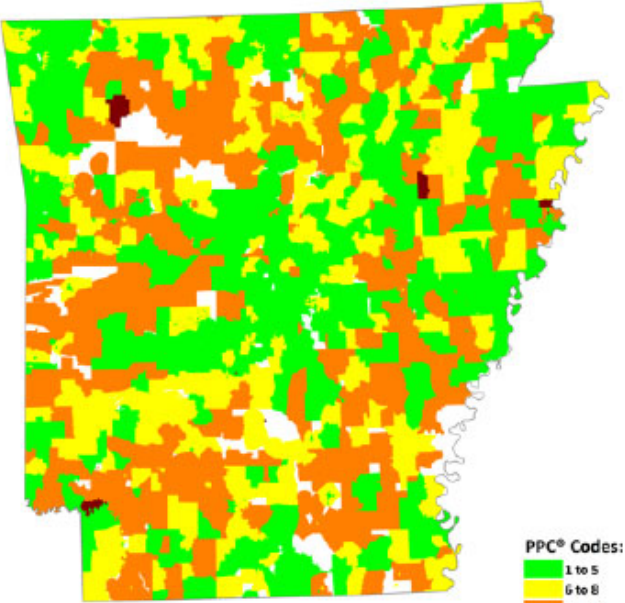


Derrick W. Smith

DWS/dl
Enclosures



Arkansas ISO Public Protection Classifications



PPC® Codes:
1 to 5
6 to 8
8 or 9
10

Lower PPC numbers indicate greater fire suppression capability.

This map depicts area classifications in general. The classification for a property may be different than what is indicated based upon its distance from a recognized fire station and/or water supply.

White denotes unprotected areas outside the legal jurisdiction of any graded fire district.



Copyright, Insurance Services Office, Inc. 3/2012
PPC is a registered trademark of Insurance Services Office, Inc.

